

Datasheet for ABIN1533751
anti-HINT1 antibody (AA 71-120)[Go to Product page](#)

2 Images

Overview

Quantity:	100 µg
Target:	HINT1
Binding Specificity:	AA 71-120
Reactivity:	Human, Mouse, Rat
Host:	Rabbit
Clonality:	Polyclonal
Conjugate:	This HINT1 antibody is un-conjugated
Application:	Western Blotting (WB), ELISA, Immunofluorescence (IF)

Product Details

Immunogen:	The antiserum was produced against synthesized peptide derived from human HINT1.
Isotype:	IgG
Specificity:	HINT1 Antibody detects endogenous levels of total HINT1 protein.
Purification:	The antibody was purified from rabbit antiserum by affinity-chromatography using immunogen.
Purity:	> 95 %

Target Details

Target:	HINT1
Alternative Name:	HINT1 (HINT1 Products)
Background:	Synonyms: Histidine triad nucleotide-binding protein 1, Adenosine 5'-monophosphoramidase,

Target Details

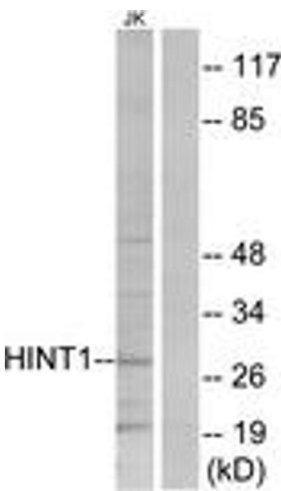
	Protein kinase C inhibitor 1, Protein kinase C-interacting protein 1, PKCI-1, HINT1, HINT, PKCI1, PRKCNH1 NCBI Gene Symbol: HINT1
Molecular Weight:	13 kDa
Gene ID:	3094
OMIM:	601314
UniProt:	P49773

Application Details

Application Notes:	WB: 1:500~1:1000 IF: 1:100~1:500 ELISA: 1:20000
Comment:	Unigene-Number: Hs.483305 (NCBI Gene Symbol: HINT1)
Restrictions:	For Research Use only

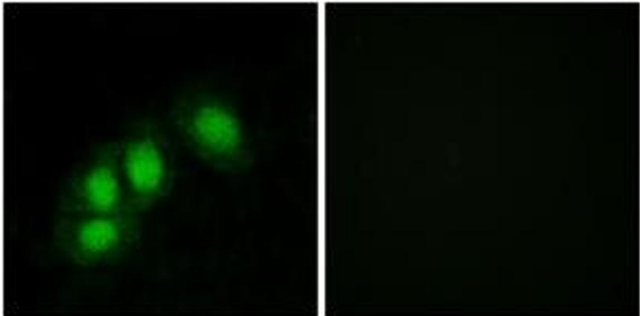
Handling

Format:	Liquid
Concentration:	1 mg/mL
Buffer:	phosphate buffered saline (without Mg ²⁺ and Ca ²⁺), pH 7.4, 150 mM NaCl, 0.02 % sodium azide and 50 % glycerol.
Preservative:	Sodium azide
Precaution of Use:	This product contains sodium azide: a POISONOUS AND HAZARDOUS SUBSTANCE which should be handled by trained staff only.
Storage:	-20 °C
Storage Comment:	Stable at -20°C for at least 1 year.
Expiry Date:	12 months



Western Blotting

Image 1. Western blot analysis of extracts from Jurkat cells, using HINT1 Antibody. The lane on the right is treated with the synthesized peptide.



Immunofluorescence

Image 2. Immunofluorescence analysis of HeLa cells, using HINT1 Antibody. The picture on the right is treated with the synthesized peptide.