

Datasheet for ABIN1533757
anti-FXR2 antibody (AA 551-600)

3 Images

[Go to Product page](#)

Overview

Quantity:	100 µg
Target:	FXR2
Binding Specificity:	AA 551-600
Reactivity:	Human, Mouse
Host:	Rabbit
Clonality:	Polyclonal
Conjugate:	This FXR2 antibody is un-conjugated
Application:	Western Blotting (WB), Immunofluorescence (IF), ELISA, Immunohistochemistry (IHC)

Product Details

Immunogen:	The antiserum was produced against synthesized peptide derived from human FXR2.
Isotype:	IgG
Specificity:	FXR2 Antibody detects endogenous levels of total FXR2 protein.
Purification:	The antibody was purified from rabbit antiserum by affinity-chromatography using immunogen.
Purity:	> 95 %

Target Details

Target:	FXR2
Alternative Name:	FXR2 (FXR2 Products)
Background:	Synonyms: Fragile X mental retardation syndrome related protein 2

Target Details

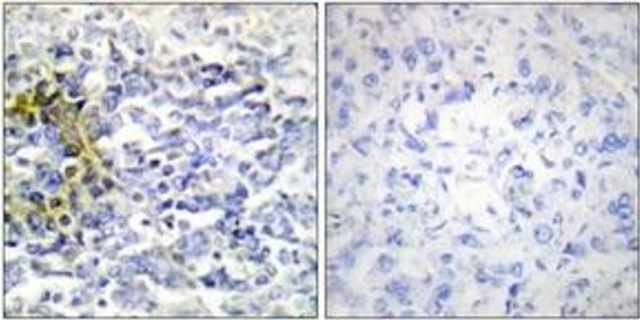
	NCBI Gene Symbol: FXR2
Molecular Weight:	74 kDa
Gene ID:	9513
OMIM:	605339
UniProt:	P51116

Application Details

Application Notes:	WB: 1:500~1:1000 IHC: 1:50~1:100 IF: 1:100~1:500 ELISA: 1:10000
Comment:	Unigene-Number: Hs.52788 (NCBI Gene Symbol: FXR2)
Restrictions:	For Research Use only

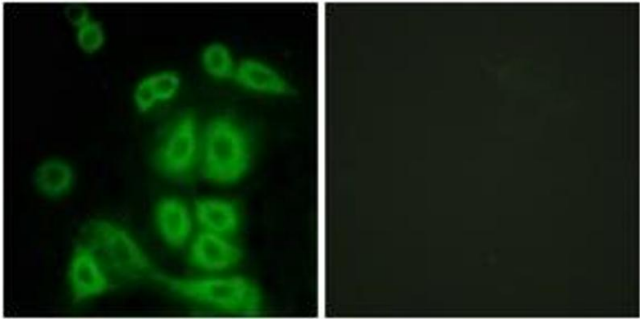
Handling

Format:	Liquid
Concentration:	1 mg/mL
Buffer:	phosphate buffered saline (without Mg ²⁺ and Ca ²⁺), pH 7.4, 150 mM NaCl, 0.02 % sodium azide and 50 % glycerol.
Preservative:	Sodium azide
Precaution of Use:	This product contains sodium azide: a POISONOUS AND HAZARDOUS SUBSTANCE which should be handled by trained staff only.
Storage:	-20 °C
Storage Comment:	Stable at -20°C for at least 1 year.
Expiry Date:	12 months



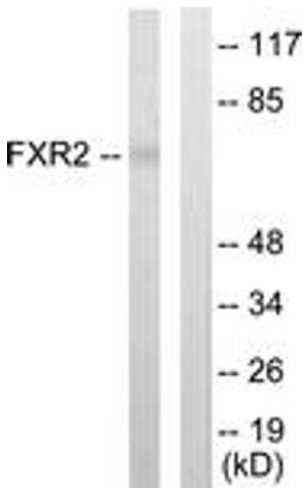
Immunohistochemistry

Image 1. Immunohistochemistry analysis of paraffin-embedded human lung carcinoma tissue, using FXR2 Antibody. The picture on the right is treated with the synthesized peptide.



Immunofluorescence

Image 2. Immunofluorescence analysis of A549 cells, using FXR2 Antibody. The picture on the right is treated with the synthesized peptide.



Western Blotting

Image 3. Western blot analysis of extracts from COLO205 cells, using FXR2 Antibody. The lane on the right is treated with the synthesized peptide.