

Datasheet for ABIN1533772
anti-RBM5 antibody (AA 226-275)[Go to Product page](#)

2 Images

Overview

Quantity:	100 µg
Target:	RBM5
Binding Specificity:	AA 226-275
Reactivity:	Human, Mouse
Host:	Rabbit
Clonality:	Polyclonal
Conjugate:	This RBM5 antibody is un-conjugated
Application:	Western Blotting (WB), ELISA, Immunohistochemistry (IHC)

Product Details

Immunogen:	The antiserum was produced against synthesized peptide derived from human RBM5.
Isotype:	IgG
Specificity:	RBM5 Antibody detects endogenous levels of total RBM5 protein.
Purification:	The antibody was purified from rabbit antiserum by affinity-chromatography using immunogen.
Purity:	> 95 %

Target Details

Target:	RBM5
Alternative Name:	RBM5 (RBM5 Products)
Background:	Synonyms: G15, H37, LUCA15, RMB5, RNA binding motif protein 5

Target Details

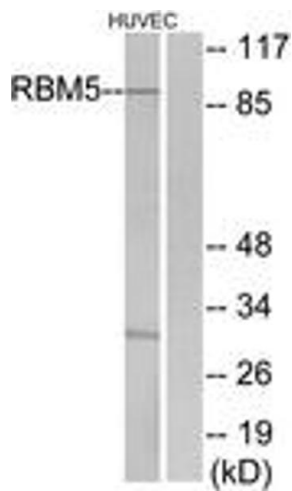
	NCBI Gene Symbol: RBM5
Molecular Weight:	92 kDa
Gene ID:	10181
OMIM:	606884
UniProt:	P52756
Pathways:	Ribonucleoprotein Complex Subunit Organization

Application Details

Application Notes:	WB: 1:500~1:1000 IHC: 1:50~1:100 ELISA: 1:10000
Comment:	Unigene-Number: Hs.439480 (NCBI Gene Symbol: RBM5)
Restrictions:	For Research Use only

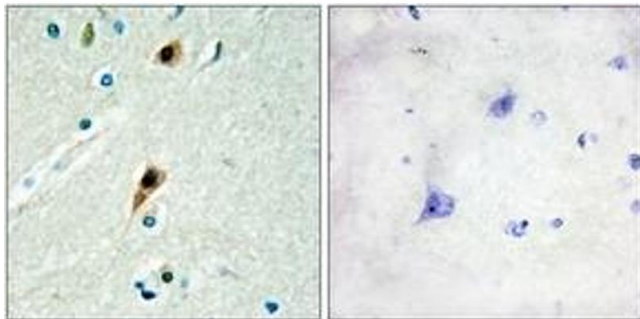
Handling

Format:	Liquid
Concentration:	1 mg/mL
Buffer:	phosphate buffered saline (without Mg ²⁺ and Ca ²⁺), pH 7.4, 150 mM NaCl, 0.02 % sodium azide and 50 % glycerol.
Preservative:	Sodium azide
Precaution of Use:	This product contains sodium azide: a POISONOUS AND HAZARDOUS SUBSTANCE which should be handled by trained staff only.
Storage:	-20 °C
Storage Comment:	Stable at -20°C for at least 1 year.
Expiry Date:	12 months



Western Blotting

Image 1. Western blot analysis of extracts from HuvEc cells, using RBM5 Antibody. The lane on the right is treated with the synthesized peptide.



Immunohistochemistry

Image 2. Immunohistochemistry analysis of paraffin-embedded human brain tissue, using RBM5 Antibody. The picture on the right is treated with the synthesized peptide.