

Datasheet for ABIN1533779  
**anti-LIMK2 antibody (AA 461-510)**

## 3 Images

[Go to Product page](#)

## Overview

Quantity:	100 µg
Target:	LIMK2
Binding Specificity:	AA 461-510
Reactivity:	Human, Mouse, Rat
Host:	Rabbit
Clonality:	Polyclonal
Application:	Western Blotting (WB), Immunohistochemistry (IHC), ELISA, Immunofluorescence (IF)

## Product Details

Immunogen:	The antiserum was produced against synthesized peptide derived from human LIMK2.
Isotype:	IgG
Specificity:	LIMK2 Antibody detects endogenous levels of total LIMK2 protein.
Purification:	The antibody was purified from rabbit antiserum by affinity-chromatography using immunogen.
Purity:	> 95 %

## Target Details

Target:	LIMK2
Alternative Name:	LIMK2 ( <a href="#">LIMK2 Products</a> )
Background:	Synonyms: kinase LIMK2, LIM domain kinase 2, LIMK-2 NCBI Gene Symbol: LIMK2

## Target Details

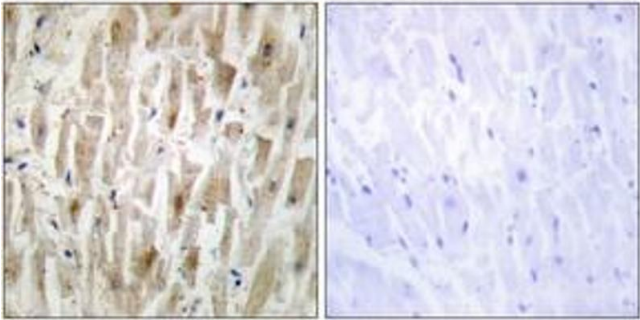
Molecular Weight:	72 kDa
Gene ID:	3985
OMIM:	601988
UniProt:	<a href="#">P53671</a>

## Application Details

Application Notes:	WB: 1:500~1:1000 IHC: 1:50~1:100 IF: 1:100~1:500 ELISA: 1:40000
Comment:	Unigene-Number: Hs.474596 (NCBI Gene Symbol: LIMK2)
Restrictions:	For Research Use only

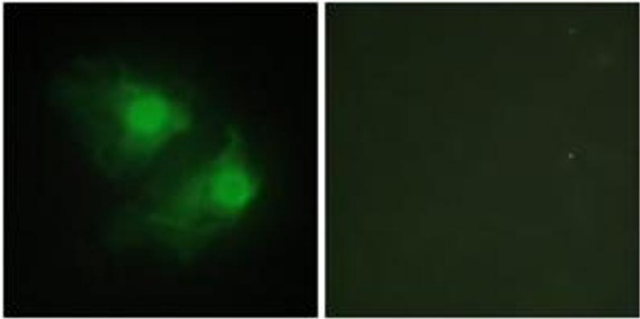
## Handling

Format:	Liquid
Concentration:	1 mg/mL
Buffer:	phosphate buffered saline (without Mg <sup>2+</sup> and Ca <sup>2+</sup> ), pH 7.4, 150 mM NaCl, 0.02 % sodium azide and 50 % glycerol.
Preservative:	Sodium azide
Precaution of Use:	This product contains sodium azide: a POISONOUS AND HAZARDOUS SUBSTANCE which should be handled by trained staff only.
Storage:	-20 °C
Storage Comment:	Stable at -20°C for at least 1 year.
Expiry Date:	12 months



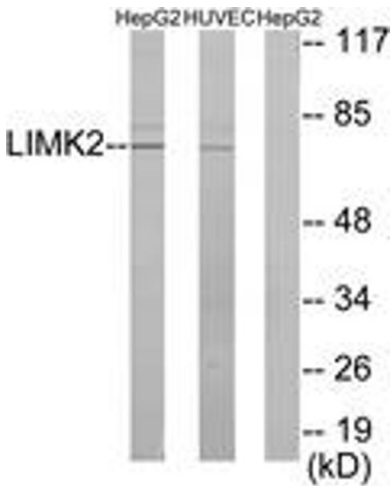
### Immunohistochemistry

**Image 1.** Immunohistochemistry analysis of paraffin-embedded human heart tissue, using LIMK2 Antibody. The picture on the right is treated with the synthesized peptide.



### Immunofluorescence

**Image 2.** Immunofluorescence analysis of HeLa cells, using LIMK2 Antibody. The picture on the right is treated with the synthesized peptide.



### Western Blotting

**Image 3.** Western blot analysis of extracts from HepG2/HuvEc cells, using LIMK2 Antibody. The lane on the right is treated with the synthesized peptide.