

Datasheet for ABIN1533781
anti-PTTG1 antibody (AA 116-165)

2 Images

[Go to Product page](#)

Overview

Quantity:	100 µg
Target:	PTTG1
Binding Specificity:	AA 116-165
Reactivity:	Human, Mouse, Rat
Host:	Rabbit
Clonality:	Polyclonal
Conjugate:	This PTTG1 antibody is un-conjugated
Application:	Western Blotting (WB), ELISA, Immunohistochemistry (IHC)

Product Details

Immunogen:	The antiserum was produced against synthesized peptide derived from human PTTG.
Isotype:	IgG
Specificity:	PTTG Antibody detects endogenous levels of total PTTG protein.
Purification:	The antibody was purified from rabbit antiserum by affinity-chromatography using immunogen.
Purity:	> 95 %

Target Details

Target:	PTTG1
Alternative Name:	PTTG (PTTG1 Products)
Background:	Synonyms: C21orf1, PBF, PTTG, PTTG-binding factor, pituitary tumor-transforming gene 1

Target Details

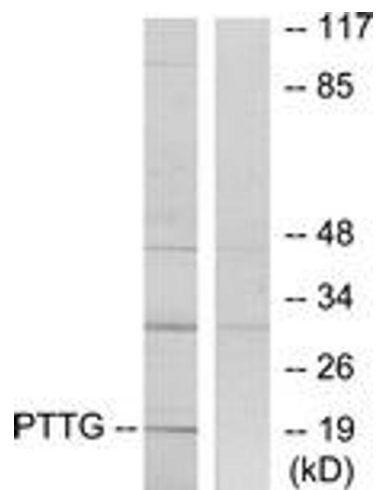
	protein-interacting protein, pituitary tumor-transforming gene protein binding factor NCBI Gene Symbol: PTTG1IP
Molecular Weight:	20 kDa
Gene ID:	754
OMIM:	603784
UniProt:	P53801

Application Details

Application Notes:	WB: 1:500~1:1000 IHC: 1:50~1:100 ELISA: 1:10000
Comment:	Unigene-Number: Hs.474010 (NCBI Gene Symbol: PTTG1IP)
Restrictions:	For Research Use only

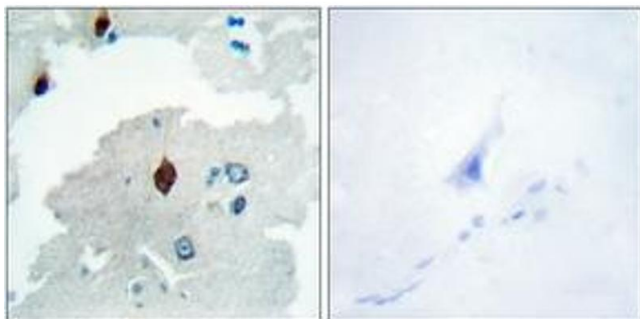
Handling

Format:	Liquid
Concentration:	1 mg/mL
Buffer:	phosphate buffered saline (without Mg ²⁺ and Ca ²⁺), pH 7.4, 150 mM NaCl, 0.02 % sodium azide and 50 % glycerol.
Preservative:	Sodium azide
Precaution of Use:	This product contains sodium azide: a POISONOUS AND HAZARDOUS SUBSTANCE which should be handled by trained staff only.
Storage:	-20 °C
Storage Comment:	Stable at -20°C for at least 1 year.
Expiry Date:	12 months



Western Blotting

Image 1. Western blot analysis of extracts from RAW264.7 cells, using PTTG Antibody. The lane on the right is treated with the synthesized peptide.



Immunohistochemistry

Image 2. Immunohistochemistry analysis of paraffin-embedded human brain tissue, using PTTG Antibody. The picture on the right is treated with the synthesized peptide.