

Datasheet for ABIN1533797
anti-CKS1 antibody (AA 10-59)

2 Images

[Go to Product page](#)

Overview

Quantity:	100 µg
Target:	CKS1 (CKS1B)
Binding Specificity:	AA 10-59
Reactivity:	Human, Mouse
Host:	Rabbit
Clonality:	Polyclonal
Conjugate:	This CKS1 antibody is un-conjugated
Application:	Western Blotting (WB), ELISA, Immunofluorescence (IF)

Product Details

Immunogen:	The antiserum was produced against synthesized peptide derived from human CKS1.
Isotype:	IgG
Specificity:	CKS1 Antibody detects endogenous levels of total CKS1 protein.
Purification:	The antibody was purified from rabbit antiserum by affinity-chromatography using immunogen.
Purity:	> 95 %

Target Details

Target:	CKS1 (CKS1B)
Alternative Name:	CKS1 (CKS1B Products)
Background:	Synonyms: CKS-1, CKS1B, cyclin-dependent kinases regulatory subunit 1, PNAS-16, PNAS-143

Target Details

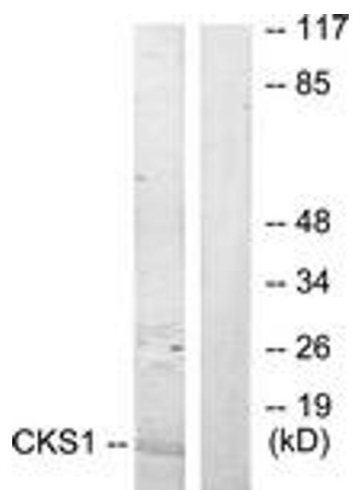
	NCBI Gene Symbol: CKS1
Molecular Weight:	9 kDa
Gene ID:	1163
OMIM:	116900
UniProt:	P61024
Pathways:	Mitotic G1-G1/S Phases , Inositol Metabolic Process

Application Details

Application Notes:	WB: 1:500~1:1000 IF: 1:100~1:500 ELISA: 1:20000
Comment:	Unigene-Number: Hs.374378 (NCBI Gene Symbol: CKS1)
Restrictions:	For Research Use only

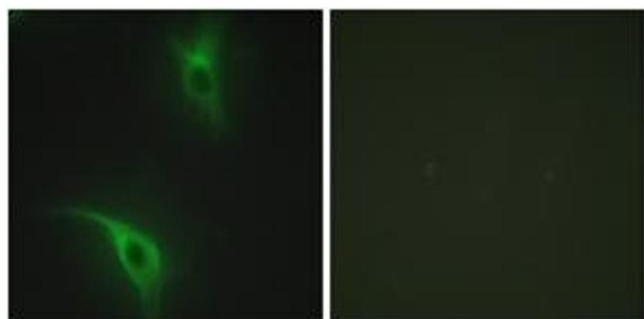
Handling

Format:	Liquid
Concentration:	1 mg/mL
Buffer:	phosphate buffered saline (without Mg ²⁺ and Ca ²⁺), pH 7.4, 150 mM NaCl, 0.02 % sodium azide and 50 % glycerol.
Preservative:	Sodium azide
Precaution of Use:	This product contains sodium azide: a POISONOUS AND HAZARDOUS SUBSTANCE which should be handled by trained staff only.
Storage:	-20 °C
Storage Comment:	Stable at -20°C for at least 1 year.
Expiry Date:	12 months



Western Blotting

Image 1. Western blot analysis of extracts from Jurkat cells, treated with serum 20% 15', using CKS1 Antibody. The lane on the right is treated with the synthesized peptide.



Immunofluorescence

Image 2. Immunofluorescence analysis of HeLa cells, using CKS1 Antibody. The picture on the right is treated with the synthesized peptide.