

Datasheet for ABIN1533798
anti-COPS2 antibody (AA 181-230)

2 Images

[Go to Product page](#)

Overview

Quantity:	100 µg
Target:	COPS2
Binding Specificity:	AA 181-230
Reactivity:	Human, Mouse, Rat
Host:	Rabbit
Clonality:	Polyclonal
Conjugate:	This COPS2 antibody is un-conjugated
Application:	Western Blotting (WB), ELISA, Immunofluorescence (IF)

Product Details

Immunogen:	The antiserum was produced against synthesized peptide derived from human COPS2.
Isotype:	IgG
Specificity:	COPS2 Antibody detects endogenous levels of total COPS2 protein.
Purification:	The antibody was purified from rabbit antiserum by affinity-chromatography using immunogen.
Purity:	> 95 %

Target Details

Target:	COPS2
Alternative Name:	COPS2 (COPS2 Products)
Background:	Synonyms: COP9 signalosome complex subunit 2, SGN2, Signalosome subunit 2, Alien

Target Details

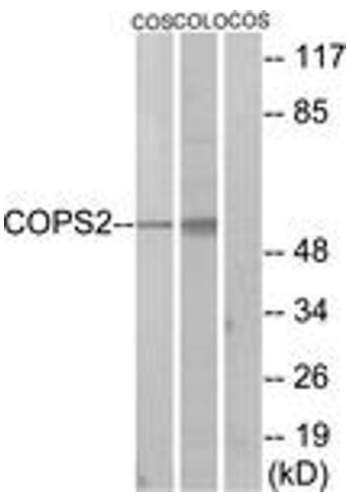
	homolog, JAB1-containing signalosome subunit 2, Thyroid receptor-interacting protein 15, TR-interacting protein 15, TRIP-15 , COPS2 , CSN2, TRIP15 NCBI Gene Symbol: COPS2
Molecular Weight:	51 kDa
Gene ID:	9318
OMIM:	604508
UniProt:	P61201
Pathways:	Cell Division Cycle

Application Details

Application Notes:	WB: 1:500~1:1000 IF: 1:100~1:500 ELISA: 1:20000
Comment:	Unigene-Number: Hs.369614 (NCBI Gene Symbol: COPS2)
Restrictions:	For Research Use only

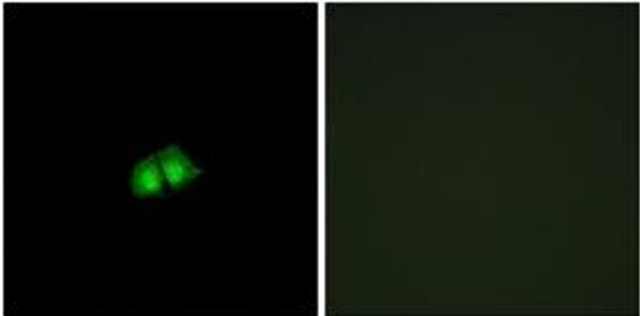
Handling

Format:	Liquid
Concentration:	1 mg/mL
Buffer:	phosphate buffered saline (without Mg ²⁺ and Ca ²⁺), pH 7.4, 150 mM NaCl, 0.02 % sodium azide and 50 % glycerol.
Preservative:	Sodium azide
Precaution of Use:	This product contains sodium azide: a POISONOUS AND HAZARDOUS SUBSTANCE which should be handled by trained staff only.
Storage:	-20 °C
Storage Comment:	Stable at -20°C for at least 1 year.
Expiry Date:	12 months



Western Blotting

Image 1. Western blot analysis of extracts from COS7/COLO205 cells, using COPS2 Antibody. The lane on the right is treated with the synthesized peptide.



Immunofluorescence

Image 2. Immunofluorescence analysis of A549 cells, using COPS2 Antibody. The picture on the right is treated with the synthesized peptide.