

Datasheet for ABIN1533801
anti-BLCAP antibody (AA 38-87)



[Go to Product page](#)

1 Image

Overview

Quantity:	100 µg
Target:	BLCAP
Binding Specificity:	AA 38-87
Reactivity:	Human, Rat, Mouse
Host:	Rabbit
Clonality:	Polyclonal
Conjugate:	This BLCAP antibody is un-conjugated
Application:	ELISA, Immunofluorescence (IF)

Product Details

Immunogen:	The antiserum was produced against synthesized peptide derived from human BLCAP.
Isotype:	IgG
Specificity:	BLCAP Antibody detects endogenous levels of total BLCAP protein.
Purification:	The antibody was purified from rabbit antiserum by affinity-chromatography using immunogen.
Purity:	> 95 %

Target Details

Target:	BLCAP
Alternative Name:	BLCAP (BLCAP Products)
Background:	Synonyms: Bladder cancer-associated protein, Bladder cancer 10 kDa protein, Bc10, BLCAP

Target Details

NCBI Gene Symbol: BLCAP

Molecular Weight: 9 kDa

Gene ID: 10904

OMIM: 613110

UniProt: [P62952](#)

Application Details

Application Notes: IF: 1:100~1:500 ELISA: 1:40000

Comment: Unigene-Number: Hs.472651, Hs.724405 (NCBI Gene Symbol: BLCAP)

Restrictions: For Research Use only

Handling

Format: Liquid

Concentration: 1 mg/mL

Buffer: phosphate buffered saline (without Mg²⁺ and Ca²⁺), pH 7.4, 150 mM NaCl, 0.02 % sodium azide and 50 % glycerol.

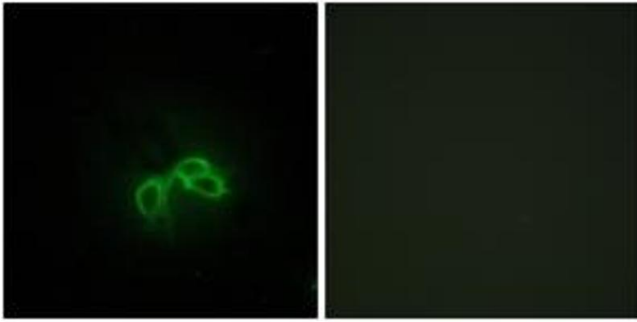
Preservative: Sodium azide

Precaution of Use: This product contains sodium azide: a POISONOUS AND HAZARDOUS SUBSTANCE which should be handled by trained staff only.

Storage: -20 °C

Storage Comment: Stable at -20°C for at least 1 year.

Expiry Date: 12 months



Immunofluorescence

Image 1. Immunofluorescence analysis of NIH-3T3 cells, using BLCAP Antibody. The picture on the right is treated with the synthesized peptide.