

Datasheet for ABIN1533802  
**anti-RBM6 antibody (AA 991-1040)**

## 3 Images

[Go to Product page](#)

## Overview

Quantity:	100 µg
Target:	RBM6
Binding Specificity:	AA 991-1040
Reactivity:	Human, Mouse
Host:	Rabbit
Clonality:	Polyclonal
Conjugate:	This RBM6 antibody is un-conjugated
Application:	Western Blotting (WB), ELISA, Immunohistochemistry (IHC), Immunofluorescence (IF)

## Product Details

Immunogen:	The antiserum was produced against synthesized peptide derived from human RBM6.
Isotype:	IgG
Specificity:	RBM6 Antibody detects endogenous levels of total RBM6 protein.
Purification:	The antibody was purified from rabbit antiserum by affinity-chromatography using immunogen.
Purity:	> 95 %

## Target Details

Target:	RBM6
Alternative Name:	RBM6 ( <a href="#">RBM6 Products</a> )
Background:	Synonyms: RNA-binding protein 6, RNA-binding motif protein 6, RNA-binding protein DEF-3,

## Target Details

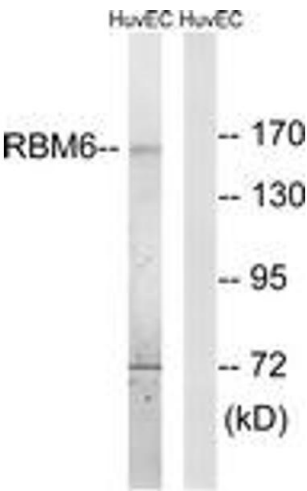
	Lung cancer antigen NY-LU-12, Protein G16, RBM6, DEF3 NCBI Gene Symbol: RBM6
Molecular Weight:	128 kDa
Gene ID:	10180
OMIM:	606886
UniProt:	<a href="#">P78332</a>

## Application Details

Application Notes:	WB: 1:500~1:1000 IHC: 1:50~1:100 IF: 1:100~1:500 ELISA: 1:20000
Comment:	Unigene-Number: Hs.696735. (NCBI Gene Symbol: RBM6)
Restrictions:	For Research Use only

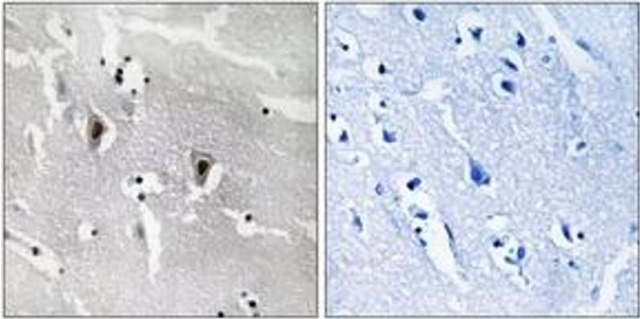
## Handling

Format:	Liquid
Concentration:	1 mg/mL
Buffer:	phosphate buffered saline (without Mg <sup>2+</sup> and Ca <sup>2+</sup> ), pH 7.4, 150 mM NaCl, 0.02 % sodium azide and 50 % glycerol.
Preservative:	Sodium azide
Precaution of Use:	This product contains sodium azide: a POISONOUS AND HAZARDOUS SUBSTANCE which should be handled by trained staff only.
Storage:	-20 °C
Storage Comment:	Stable at -20°C for at least 1 year.
Expiry Date:	12 months



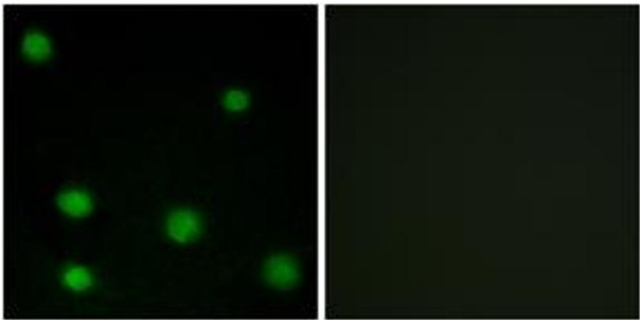
### Western Blotting

**Image 1.** Western blot analysis of extracts from HuvEc cells, using RBM6 Antibody. The lane on the right is treated with the synthesized peptide.



### Immunohistochemistry

**Image 2.** Immunohistochemistry analysis of paraffin-embedded human brain tissue, using RBM6 Antibody. The picture on the right is treated with the synthesized peptide.



### Immunofluorescence

**Image 3.** Immunofluorescence analysis of COS7 cells, using RBM6 Antibody. The picture on the right is treated with the synthesized peptide.