

Datasheet for ABIN1533810
anti-SSBP2 antibody (AA 10-59)

2 Images

[Go to Product page](#)

Overview

Quantity:	100 µg
Target:	SSBP2
Binding Specificity:	AA 10-59
Reactivity:	Human, Mouse
Host:	Rabbit
Clonality:	Polyclonal
Conjugate:	This SSBP2 antibody is un-conjugated
Application:	Western Blotting (WB), ELISA, Immunohistochemistry (IHC)

Product Details

Immunogen:	The antiserum was produced against synthesized peptide derived from human SSBP2.
Isotype:	IgG
Specificity:	SSBP2 Antibody detects endogenous levels of total SSBP2 protein.
Purification:	The antibody was purified from rabbit antiserum by affinity-chromatography using immunogen.
Purity:	> 95 %

Target Details

Target:	SSBP2
Alternative Name:	SSBP2 (SSBP2 Products)
Background:	Synonyms: Single-stranded DNA-binding protein 2, Sequence-specific single-stranded-DNA-

Target Details

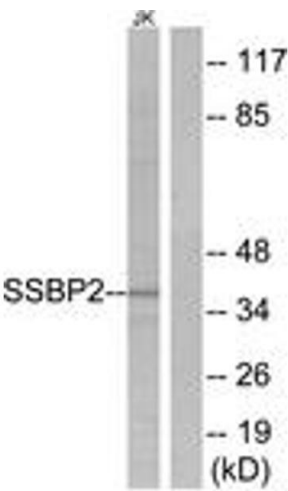
	binding protein 2, SSB2, SSDP2 NCBI Gene Symbol: SSBP2
Molecular Weight:	37 kDa
Gene ID:	23635
OMIM:	607389
UniProt:	P81877

Application Details

Application Notes:	WB: 1:500~1:1000 IHC: 1:50~1:100 ELISA: 1:10000
Comment:	Unigene-Number: Hs.102735 (NCBI Gene Symbol: SSBP2)
Restrictions:	For Research Use only

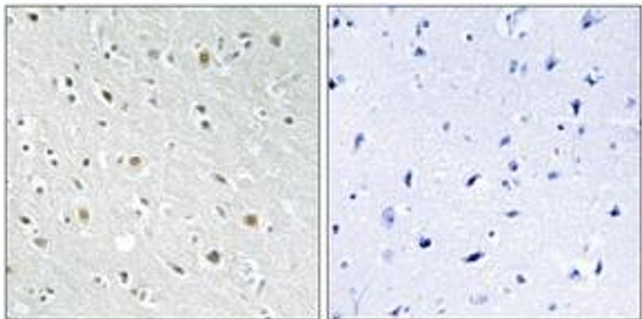
Handling

Format:	Liquid
Concentration:	1 mg/mL
Buffer:	phosphate buffered saline (without Mg ²⁺ and Ca ²⁺), pH 7.4, 150 mM NaCl, 0.02 % sodium azide and 50 % glycerol.
Preservative:	Sodium azide
Precaution of Use:	This product contains sodium azide: a POISONOUS AND HAZARDOUS SUBSTANCE which should be handled by trained staff only.
Storage:	-20 °C
Storage Comment:	Stable at -20°C for at least 1 year.
Expiry Date:	12 months



Western Blotting

Image 1. Western blot analysis of extracts from Jurkat cells, using SSBP2 Antibody. The lane on the right is treated with the synthesized peptide.



Immunohistochemistry

Image 2. Immunohistochemistry analysis of paraffin-embedded human brain tissue, using SSBP2 Antibody. The picture on the right is treated with the synthesized peptide.