

Datasheet for ABIN1533832
anti-TLE2 antibody (AA 211-260)



[Go to Product page](#)

1 Image

Overview

Quantity:	100 µL
Target:	TLE2
Binding Specificity:	AA 211-260
Reactivity:	Human
Host:	Rabbit
Clonality:	Polyclonal
Conjugate:	This TLE2 antibody is un-conjugated
Application:	Western Blotting (WB), ELISA

Product Details

Immunogen:	The antiserum was produced against synthesized peptide derived from human TLE2.
Isotype:	IgG
Specificity:	TLE2 Antibody detects endogenous levels of total TLE2 protein.
Purification:	The antibody was purified from rabbit antiserum by affinity-chromatography using immunogen.
Purity:	> 95 %

Target Details

Target:	TLE2
Alternative Name:	TLE2 (TLE2 Products)
Background:	Synonyms: Transducin-like enhancer protein 2, Enhancer of split groucho-like protein 2, ESG2,

Target Details

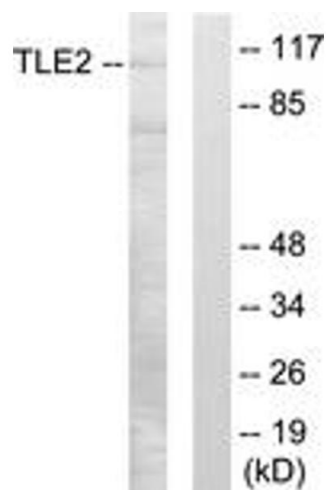
	TLE2
	NCBI Gene Symbol: TLE2
Molecular Weight:	79 kDa
Gene ID:	7089
OMIM:	601041
UniProt:	Q04725
Pathways:	WNT Signaling

Application Details

Application Notes:	WB: 1:500~1:1000 ELISA: 1:20000
Comment:	Unigene-Number: Hs.332173 (NCBI Gene Symbol: TLE2)
Restrictions:	For Research Use only

Handling

Format:	Liquid
Concentration:	1 mg/mL
Buffer:	phosphate buffered saline (without Mg ²⁺ and Ca ²⁺), pH 7.4, 150 mM NaCl, 0.02 % sodium azide and 50 % glycerol.
Preservative:	Sodium azide
Precaution of Use:	This product contains sodium azide: a POISONOUS AND HAZARDOUS SUBSTANCE which should be handled by trained staff only.
Storage:	-20 °C
Storage Comment:	Stable at -20°C for at least 1 year.
Expiry Date:	12 months



Western Blotting

Image 1. Western blot analysis of extracts from LOVO cells, using TLE2 Antibody. The lane on the right is treated with the synthesized peptide.