

Datasheet for ABIN1533835
anti-SSBP1 antibody (AA 99-148)



[Go to Product page](#)

3 Images

Overview

Quantity:	100 µg
Target:	SSBP1
Binding Specificity:	AA 99-148
Reactivity:	Human, Mouse, Rat
Host:	Rabbit
Clonality:	Polyclonal
Conjugate:	This SSBP1 antibody is un-conjugated
Application:	Western Blotting (WB), ELISA, Immunohistochemistry (IHC), Immunofluorescence (IF)

Product Details

Immunogen:	The antiserum was produced against synthesized peptide derived from human MtSSB.
Isotype:	IgG
Specificity:	MtSSB Antibody detects endogenous levels of total MtSSB protein.
Purification:	The antibody was purified from rabbit antiserum by affinity-chromatography using immunogen.
Purity:	> 95 %

Target Details

Target:	SSBP1
Alternative Name:	MtSSB (SSBP1 Products)
Background:	Synonyms: Single-stranded DNA-binding protein mitochondrial, Mt-SSB, MtSSB, PWP1-

Target Details

interacting protein 17, SSB, SSBP

NCBI Gene Symbol: MtSSB

Molecular Weight: 17 kDa

Gene ID: 6742

OMIM: 600439

UniProt: [Q04837](#)

Pathways: [Chromatin Binding](#)

Application Details

Application Notes: WB: 1:500~1:1000 IHC: 1:50~1:100 IF: 1:100~1:500 ELISA: 1:1000

Comment: Unigene-Number: Hs.490394 (NCBI Gene Symbol: MtSSB)

Restrictions: For Research Use only

Handling

Format: Liquid

Concentration: 1 mg/mL

Buffer: phosphate buffered saline (without Mg²⁺ and Ca²⁺), pH 7.4, 150 mM NaCl, 0.02 % sodium azide and 50 % glycerol.

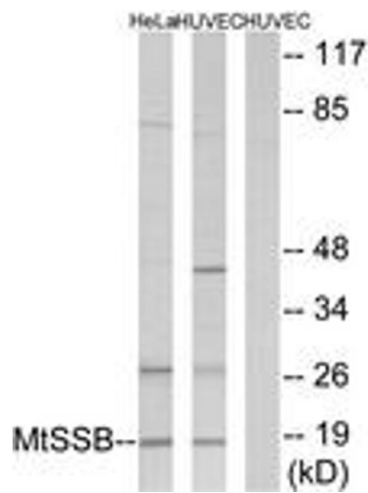
Preservative: Sodium azide

Precaution of Use: This product contains sodium azide: a POISONOUS AND HAZARDOUS SUBSTANCE which should be handled by trained staff only.

Storage: -20 °C

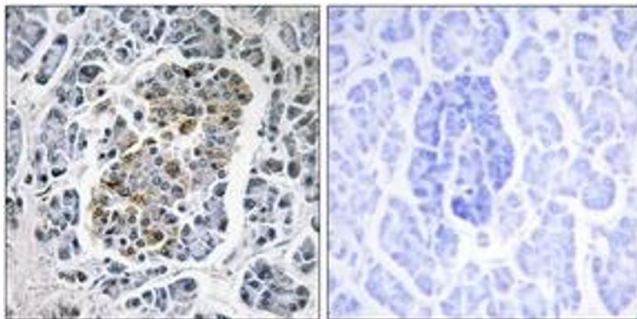
Storage Comment: Stable at -20°C for at least 1 year.

Expiry Date: 12 months



Western Blotting

Image 1. Western blot analysis of extracts from HuvEc/HeLa cells, using MtSSB Antibody. The lane on the right is treated with the synthesized peptide.



Immunohistochemistry

Image 2. Immunohistochemistry analysis of paraffin-embedded human pancreas tissue, using MtSSB Antibody. The picture on the right is treated with the synthesized peptide.



Immunofluorescence

Image 3. Immunofluorescence analysis of A549 cells, using MtSSB Antibody. The picture on the right is treated with the synthesized peptide.