

Datasheet for ABIN1533836
anti-CSTF1 antibody (AA 1-50)



[Go to Product page](#)

1 Image

Overview

Quantity:	100 µL
Target:	CSTF1
Binding Specificity:	AA 1-50
Reactivity:	Human, Mouse, Rat
Host:	Rabbit
Clonality:	Polyclonal
Conjugate:	This CSTF1 antibody is un-conjugated
Application:	Western Blotting (WB), ELISA

Product Details

Immunogen:	The antiserum was produced against synthesized peptide derived from human CSTF1.
Isotype:	IgG
Specificity:	CSTF1 Antibody detects endogenous levels of total CSTF1 protein.
Purification:	The antibody was purified from rabbit antiserum by affinity-chromatography using immunogen.
Purity:	> 95 %

Target Details

Target:	CSTF1
Alternative Name:	CSTF1 (CSTF1 Products)
Background:	Synonyms: Cleavage stimulation factor subunit 1, CF-1 50 kDa subunit, CSTF 50 kDa subunit,

Target Details

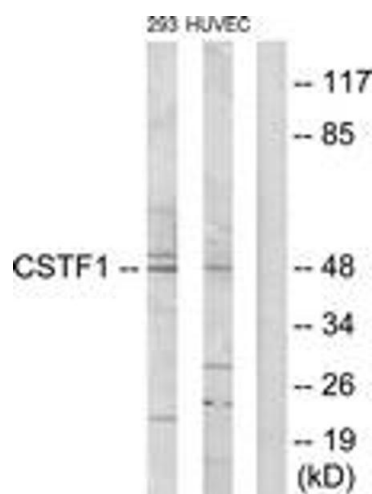
	CSTF1, Cleavage stimulation factor 50 kDa subunit NCBI Gene Symbol: CSTF1
Molecular Weight:	48 kDa
Gene ID:	1477
OMIM:	600369
UniProt:	Q05048

Application Details

Application Notes:	WB: 1:500~1:1000 ELISA: 1:20000
Comment:	Unigene-Number: Hs.172865 (NCBI Gene Symbol: CSTF1)
Restrictions:	For Research Use only

Handling

Format:	Liquid
Concentration:	1 mg/mL
Buffer:	phosphate buffered saline (without Mg2+ and Ca2+), pH 7.4, 150 mM NaCl, 0.02 % sodium azide and 50 % glycerol.
Preservative:	Sodium azide
Precaution of Use:	This product contains sodium azide: a POISONOUS AND HAZARDOUS SUBSTANCE which should be handled by trained staff only.
Storage:	-20 °C
Storage Comment:	Stable at -20°C for at least 1 year.
Expiry Date:	12 months



Western Blotting

Image 1. Western blot analysis of extracts from HuvEc/293 cells, using CSTF1 Antibody. The lane on the right is treated with the synthesized peptide.