

Datasheet for ABIN1533839
anti-LTB antibody (AA 181-230)[Go to Product page](#)

2 Images

Overview

Quantity:	100 µg
Target:	LTB
Binding Specificity:	AA 181-230
Reactivity:	Human, Mouse
Host:	Rabbit
Clonality:	Polyclonal
Application:	Western Blotting (WB), ELISA, Immunofluorescence (IF)

Product Details

Immunogen:	The antiserum was produced against synthesized peptide derived from human TNFC.
Isotype:	IgG
Specificity:	TNFC Antibody detects endogenous levels of total TNFC protein.
Purification:	The antibody was purified from rabbit antiserum by affinity-chromatography using immunogen.
Purity:	> 95 %

Target Details

Target:	LTB
Alternative Name:	TNFC (LTB Products)
Background:	Synonyms: Lymphotoxin-beta, LT-beta, Tumor necrosis factor C, TNF-C, Tumor necrosis factor ligand superfamily member 3, LTB, TNFC, TNFSF3

Target Details

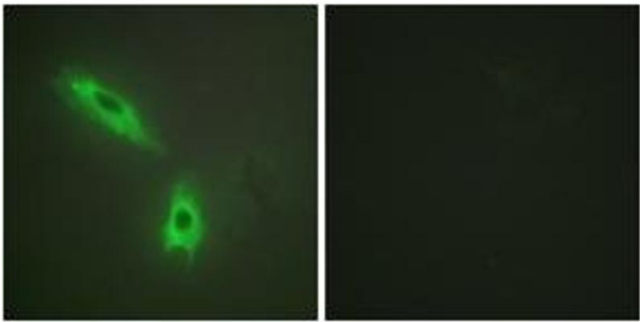
	NCBI Gene Symbol: TNFC
Molecular Weight:	25 kDa
Gene ID:	4050
OMIM:	600978
UniProt:	Q06643
Pathways:	NF-kappaB Signaling

Application Details

Application Notes:	WB: 1:500~1:1000 IF: 1:100~1:500 ELISA: 1:10000
Comment:	Unigene-Number: Hs.376208 (NCBI Gene Symbol: TNFC)
Restrictions:	For Research Use only

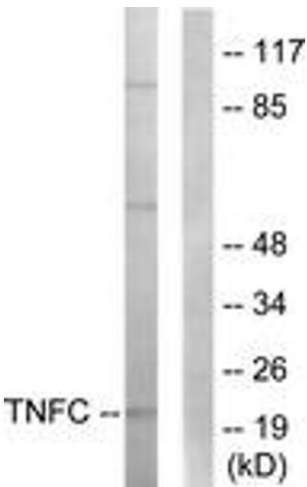
Handling

Format:	Liquid
Concentration:	1 mg/mL
Buffer:	phosphate buffered saline (without Mg ²⁺ and Ca ²⁺), pH 7.4, 150 mM NaCl, 0.02 % sodium azide and 50 % glycerol.
Preservative:	Sodium azide
Precaution of Use:	This product contains sodium azide: a POISONOUS AND HAZARDOUS SUBSTANCE which should be handled by trained staff only.
Storage:	-20 °C
Storage Comment:	Stable at -20°C for at least 1 year.
Expiry Date:	12 months



Immunofluorescence

Image 1. Immunofluorescence analysis of HeLa cells, using TNFC Antibody. The picture on the right is treated with the synthesized peptide.



Western Blotting

Image 2. Western blot analysis of extracts from HepG2 cells, using TNFC Antibody. The lane on the right is treated with the synthesized peptide.