

Datasheet for ABIN1533845

anti-CBFA2T3 antibody (AA 261-310)[Go to Product page](#)**1** Image

Overview

Quantity:	100 µL
Target:	CBFA2T3
Binding Specificity:	AA 261-310
Reactivity:	Human, Mouse
Host:	Rabbit
Clonality:	Polyclonal
Conjugate:	This CBFA2T3 antibody is un-conjugated
Application:	ELISA, Immunohistochemistry (IHC)

Product Details

Immunogen:	The antiserum was produced against synthesized peptide derived from human MTG16.
Isotype:	IgG
Specificity:	MTG16 Antibody detects endogenous levels of total MTG16 protein.
Purification:	The antibody was purified from rabbit antiserum by affinity-chromatography using immunogen.
Purity:	> 95 %

Target Details

Target:	CBFA2T3
Alternative Name:	MTG16 (CBFA2T3 Products)
Background:	Synonyms: Protein CBFA2T3, Myeloid translocation gene on chromosome 16 protein, hMTG16,

Target Details

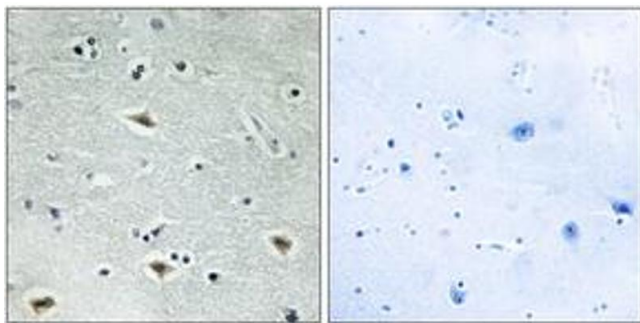
	MTG8-related protein 2, Zinc finger MYND domain-containing protein 4, CBFA2T3, MTG16, MTGR2, ZMYND4 NCBI Gene Symbol: MTG16
Molecular Weight:	71 kDa
Gene ID:	863
OMIM:	603870
UniProt:	O75081 , Q0P5Z6

Application Details

Application Notes:	IHC: 1:50~1:100 ELISA: 1:20000
Comment:	Unigene-Number: Hs.513811 (NCBI Gene Symbol: MTG16)
Restrictions:	For Research Use only

Handling

Format:	Liquid
Concentration:	1 mg/mL
Buffer:	phosphate buffered saline (without Mg ²⁺ and Ca ²⁺), pH 7.4, 150 mM NaCl, 0.02 % sodium azide and 50 % glycerol.
Preservative:	Sodium azide
Precaution of Use:	This product contains sodium azide: a POISONOUS AND HAZARDOUS SUBSTANCE which should be handled by trained staff only.
Storage:	-20 °C
Storage Comment:	Stable at -20°C for at least 1 year.
Expiry Date:	12 months



Immunohistochemistry

Image 1. Immunohistochemistry analysis of paraffin-embedded human brain tissue, using MTG16 Antibody. The picture on the right is treated with the synthesized peptide.