

Datasheet for ABIN1533857
anti-KLF10/11 antibody (AA 391-440)



[Go to Product page](#)

1 Image

Overview

Quantity:	100 µL
Target:	KLF10/11
Binding Specificity:	AA 391-440
Reactivity:	Human, Mouse, Rat
Host:	Rabbit
Clonality:	Polyclonal
Conjugate:	This KLF10/11 antibody is un-conjugated
Application:	Immunohistochemistry (IHC), ELISA

Product Details

Immunogen:	The antiserum was produced against synthesized peptide derived from human KLF10/11.
Isotype:	IgG
Specificity:	KLF10/11 Antibody detects endogenous levels of total KLF10/11 protein.
Purification:	The antibody was purified from rabbit antiserum by affinity-chromatography using immunogen.
Purity:	> 95 %

Target Details

Target:	KLF10/11
Alternative Name:	KLF10/11 (KLF10/11 Products)
Background:	Synonyms: Krueppel-like factor 10, Transforming growth factor-beta-inducible early growth

Target Details

response protein 1, TGFB-inducible early growth response protein 1, TIEG-1, EGR-alpha, Krueppel-like factor 11, Transforming growth factor-beta-inducible early growth response
NCBI Gene Symbol: KLF10/11

Molecular Weight: 52 kDa

Gene ID: 7071, 8462

OMIM: 601878

UniProt: [Q13118](#), [O14901](#)

Application Details

Application Notes: IHC: 1:50~1:100 ELISA: 1:5000

Comment: Unigene-Number: Hs.435001, Hs.12229, Hs.694968 (NCBI Gene Symbol: KLF10)8462 (NCBI Gene Symbol: KLF11)

Restrictions: For Research Use only

Handling

Format: Liquid

Concentration: 1 mg/mL

Buffer: phosphate buffered saline (without Mg²⁺ and Ca²⁺), pH 7.4, 150 mM NaCl, 0.02 % sodium azide and 50 % glycerol.

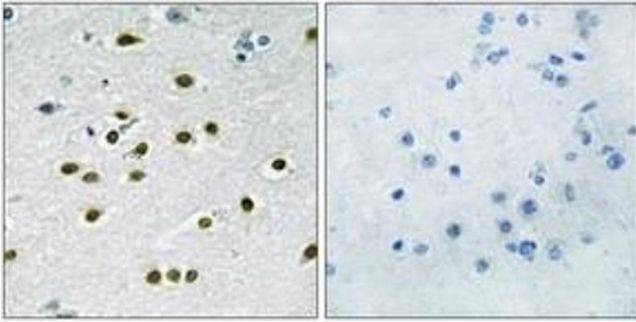
Preservative: Sodium azide

Precaution of Use: This product contains sodium azide: a POISONOUS AND HAZARDOUS SUBSTANCE which should be handled by trained staff only.

Storage: -20 °C

Storage Comment: Stable at -20°C for at least 1 year.

Expiry Date: 12 months



Immunohistochemistry

Image 1. Immunohistochemistry analysis of paraffin-embedded human brain tissue, using KLF10/11 Antibody. The picture on the right is treated with the synthesized peptide.