



[Go to Product page](#)

Datasheet for ABIN1533865  
**anti-KLF antibody (AA 291-340)**

1 Image

### Overview

Quantity:	100 µg
Target:	KLF
Binding Specificity:	AA 291-340
Reactivity:	Human, Mouse, Rat
Host:	Rabbit
Clonality:	Polyclonal
Conjugate:	This KLF antibody is un-conjugated
Application:	Western Blotting (WB), ELISA

### Product Details

Immunogen:	The antiserum was produced against synthesized peptide derived from human KLF.
Isotype:	IgG
Specificity:	KLF Antibody detects endogenous levels of total KLF protein.
Purification:	The antibody was purified from rabbit antiserum by affinity-chromatography using immunogen.
Purity:	> 95 %

### Target Details

Target:	KLF
Alternative Name:	KLF ( <a href="#">KLF Products</a> )
Background:	Synonyms: Erythroid krueppel-like transcription factor, EKLF, Erythroid transcription factor

## Target Details

---

NCBI Gene Symbol: KLF

Molecular Weight: 38 kDa

Gene ID: 10661, 688, 8609

OMIM: 600599

UniProt: [Q13351](#), [Q13887](#), [O75840](#)

## Application Details

---

Application Notes: WB: 1:500~1:1000 ELISA: 1:20000

Comment: Unigene-Number: Hs.37860, Hs.508234, Hs.471221 (NCBI Gene Symbol: KLF)

Restrictions: For Research Use only

## Handling

---

Format: Liquid

Concentration: 1 mg/mL

Buffer: phosphate buffered saline (without Mg<sup>2+</sup> and Ca<sup>2+</sup>), pH 7.4, 150 mM NaCl, 0.02 % sodium azide and 50 % glycerol.

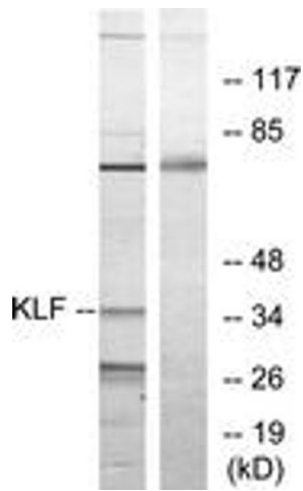
Preservative: Sodium azide

Precaution of Use: This product contains sodium azide: a POISONOUS AND HAZARDOUS SUBSTANCE which should be handled by trained staff only.

Storage: -20 °C

Storage Comment: Stable at -20°C for at least 1 year.

Expiry Date: 12 months



### Western Blotting

**Image 1.** Western blot analysis of extracts from Jurkat cells, treated with serum 20% 15', using KLF Antibody. The lane on the right is treated with the synthesized peptide.