



[Go to Product page](#)

Datasheet for ABIN1533867
anti-TCOF1 antibody (AA 41-90)

2 Images

Overview

Quantity:	100 µL
Target:	TCOF1
Binding Specificity:	AA 41-90
Reactivity:	Human, Mouse
Host:	Rabbit
Clonality:	Polyclonal
Conjugate:	This TCOF1 antibody is un-conjugated
Application:	Western Blotting (WB), Immunohistochemistry (IHC), ELISA

Product Details

Immunogen:	The antiserum was produced against synthesized peptide derived from human TCOF1.
Isotype:	IgG
Specificity:	TCOF1 Antibody detects endogenous levels of total TCOF1 protein.
Purification:	The antibody was purified from rabbit antiserum by affinity-chromatography using immunogen.
Purity:	> 95 %

Target Details

Target:	TCOF1
Alternative Name:	TCOF1 (TCOF1 Products)
Background:	Synonyms: Treacle protein, Treacher Collins syndrome protein, TCOF1

Target Details

NCBI Gene Symbol: TCOF1

Molecular Weight: 152 kDa

Gene ID: 6949

OMIM: 154500

UniProt: [Q13428](#)

Application Details

Application Notes: WB: 1:500~1:1000 IHC: 1:50~1:100 ELISA: 1:10000

Comment: Unigene-Number: Hs.519672, Hs.605019 (NCBI Gene Symbol: TCOF1)

Restrictions: For Research Use only

Handling

Format: Liquid

Concentration: 1 mg/mL

Buffer: phosphate buffered saline (without Mg²⁺ and Ca²⁺), pH 7.4, 150 mM NaCl, 0.02 % sodium azide and 50 % glycerol.

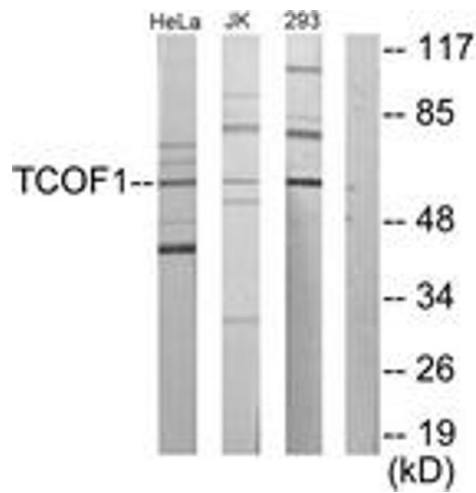
Preservative: Sodium azide

Precaution of Use: This product contains sodium azide: a POISONOUS AND HAZARDOUS SUBSTANCE which should be handled by trained staff only.

Storage: -20 °C

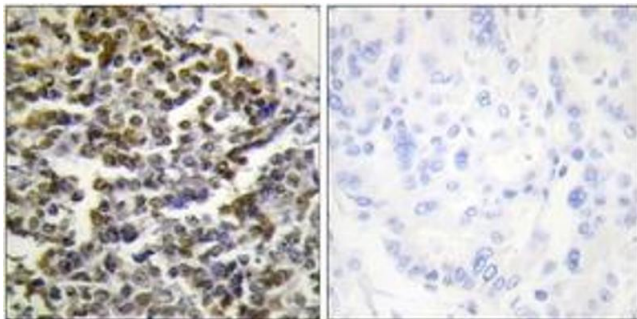
Storage Comment: Stable at -20°C for at least 1 year.

Expiry Date: 12 months



Western Blotting

Image 1. Western blot analysis of extracts from Jurkat/293/HeLa cells, using TCOF1 Antibody. The lane on the right is treated with the synthesized peptide.



Immunohistochemistry

Image 2. Immunohistochemistry analysis of paraffin-embedded human lung carcinoma tissue, using TCOF1 Antibody. The picture on the right is treated with the synthesized peptide.