

Datasheet for ABIN1533869  
**anti-FOXE3 antibody (AA 81-130)**



[Go to Product page](#)

1 Image

## Overview

Quantity:	100 µL
Target:	FOXE3
Binding Specificity:	AA 81-130
Reactivity:	Human, Mouse, Rat
Host:	Rabbit
Clonality:	Polyclonal
Conjugate:	This FOXE3 antibody is un-conjugated
Application:	Western Blotting (WB), ELISA

## Product Details

Immunogen:	The antiserum was produced against synthesized peptide derived from human FOXE3.
Isotype:	IgG
Specificity:	FOXE3 Antibody detects endogenous levels of total FOXE3 protein.
Purification:	The antibody was purified from rabbit antiserum by affinity-chromatography using immunogen.
Purity:	> 95 %

## Target Details

Target:	FOXE3
Alternative Name:	FOXE3 ( <a href="#">FOXE3 Products</a> )
Background:	Synonyms: Forkhead box protein E3, Forkhead-related protein FKHL12, Forkhead-related

## Target Details

transcription factor 8, FREAC-8, FOXE3, FKHL12, FREAC8  
NCBI Gene Symbol: FOXE3

Molecular Weight: 33 kDa

Gene ID: 2301

OMIM: 601094

UniProt: [Q13461](#)

## Application Details

Application Notes: WB: 1:500~1:1000 ELISA: 1:1000

Comment: Unigene-Number: Hs.112968 (NCBI Gene Symbol: FOXE3)

Restrictions: For Research Use only

## Handling

Format: Liquid

Concentration: 1 mg/mL

Buffer: phosphate buffered saline (without Mg<sup>2+</sup> and Ca<sup>2+</sup>), pH 7.4, 150 mM NaCl, 0.02 % sodium azide and 50 % glycerol.

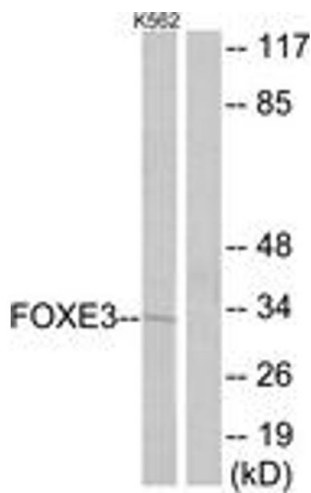
Preservative: Sodium azide

Precaution of Use: This product contains sodium azide: a POISONOUS AND HAZARDOUS SUBSTANCE which should be handled by trained staff only.

Storage: -20 °C

Storage Comment: Stable at -20°C for at least 1 year.

Expiry Date: 12 months



Western Blotting

**Image 1.** Western blot analysis of extracts from K562 cells, using FOXE3 Antibody. The lane on the right is treated with the synthesized peptide.