

Datasheet for ABIN1533877
anti-TRA2A antibody (AA 221-270)[Go to Product page](#)

3 Images

Overview

Quantity:	100 µg
Target:	TRA2A
Binding Specificity:	AA 221-270
Reactivity:	Human, Mouse
Host:	Rabbit
Clonality:	Polyclonal
Conjugate:	This TRA2A antibody is un-conjugated
Application:	Western Blotting (WB), ELISA, Immunofluorescence (IF), Immunohistochemistry (IHC)

Product Details

Immunogen:	The antiserum was produced against synthesized peptide derived from human TRA-2 alpha.
Isotype:	IgG
Specificity:	TRA-2 alpha Antibody detects endogenous levels of total TRA-2 alpha protein.
Purification:	The antibody was purified from rabbit antiserum by affinity-chromatography using immunogen.
Purity:	> 95 %

Target Details

Target:	TRA2A
Alternative Name:	TRA-2 alpha (TRA2A Products)
Background:	Synonyms: Transformer-2 protein homolog alpha, TRA-2 alpha, Transformer-2 protein homolog

Target Details

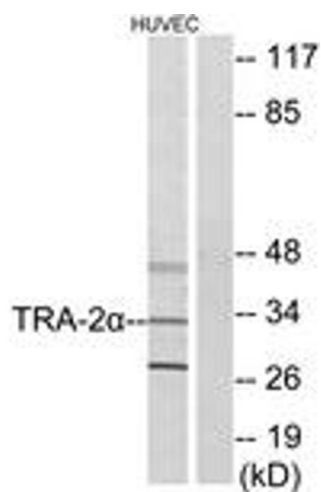
	A, TRA2A NCBI Gene Symbol: TRA-2?
Molecular Weight:	32 kDa
Gene ID:	29896
OMIM:	602718
UniProt:	Q13595

Application Details

Application Notes:	WB: 1:500~1:1000 IHC: 1:50~1:100 IF: 1:100~1:500 ELISA: 1:20000
Comment:	Unigene-Number: Hs.445652 (NCBI Gene Symbol: TRA-2a)
Restrictions:	For Research Use only

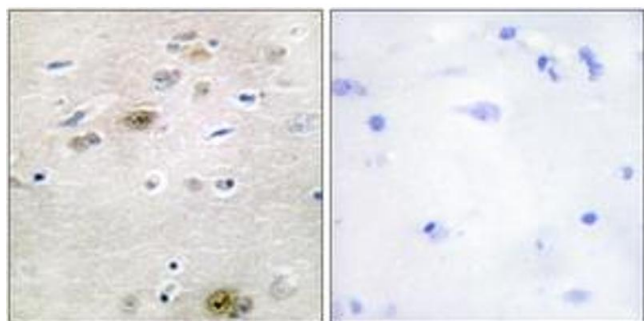
Handling

Format:	Liquid
Concentration:	1 mg/mL
Buffer:	phosphate buffered saline (without Mg ²⁺ and Ca ²⁺), pH 7.4, 150 mM NaCl, 0.02 % sodium azide and 50 % glycerol.
Preservative:	Sodium azide
Precaution of Use:	This product contains sodium azide: a POISONOUS AND HAZARDOUS SUBSTANCE which should be handled by trained staff only.
Storage:	-20 °C
Storage Comment:	Stable at -20°C for at least 1 year.
Expiry Date:	12 months



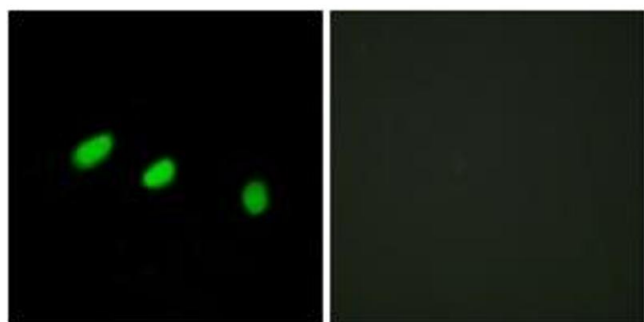
Western Blotting

Image 1. Western blot analysis of extracts from HuvEc cells, using TRA-2 alpha Antibody. The lane on the right is treated with the synthesized peptide.



Immunohistochemistry

Image 2. Immunohistochemistry analysis of paraffin-embedded human brain tissue, using TRA-2 alpha Antibody. The picture on the right is treated with the synthesized peptide.



Immunofluorescence

Image 3. Immunofluorescence analysis of HeLa cells, using TRA-2 alpha Antibody. The picture on the right is treated with the synthesized peptide.