

Datasheet for ABIN1533878  
**anti-DYRK1A antibody (AA 21-70)**

## 2 Images

[Go to Product page](#)

## Overview

Quantity:	100 µg
Target:	DYRK1A
Binding Specificity:	AA 21-70
Reactivity:	Human, Mouse, Rat
Host:	Rabbit
Clonality:	Polyclonal
Conjugate:	This DYRK1A antibody is un-conjugated
Application:	Western Blotting (WB), ELISA, Immunofluorescence (IF)

## Product Details

Immunogen:	The antiserum was produced against synthesized peptide derived from human DYRK1A.
Isotype:	IgG
Specificity:	DYRK1A Antibody detects endogenous levels of total DYRK1A protein.
Purification:	The antibody was purified from rabbit antiserum by affinity-chromatography using immunogen.
Purity:	> 95 %

## Target Details

Target:	DYRK1A
Abstract:	<a href="#">DYRK1A Products</a>
Background:	Synonyms: Dual specificity tyrosine-phosphorylation-regulated kinase 1A, Protein kinase

## Target Details

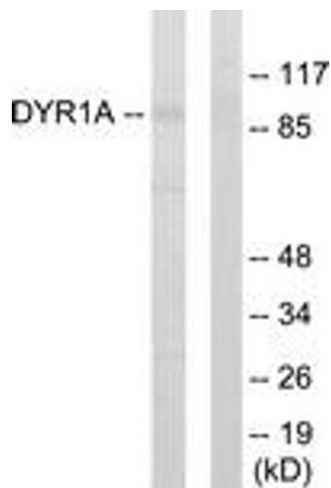
	minibrain homolog, MNBH, HP86, Dual specificity YAK1-related kinase, hMNB, DYRK, MNB NCBI Gene Symbol: DYR1A
Molecular Weight:	85 kDa
Gene ID:	1859
OMIM:	600855
UniProt:	<a href="#">Q13627</a>
Pathways:	<a href="#">Mitotic G1-G1/S Phases</a>

## Application Details

Application Notes:	WB: 1:500~1:1000 IF: 1:100~1:500 ELISA: 1:1000
Comment:	Unigene-Number: Hs.368240 (NCBI Gene Symbol: DYR1A)
Restrictions:	For Research Use only

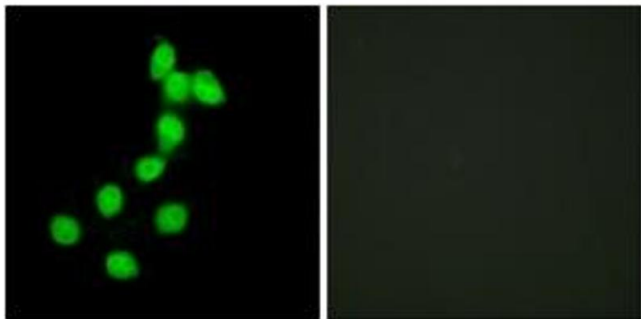
## Handling

Format:	Liquid
Concentration:	1 mg/mL
Buffer:	phosphate buffered saline (without Mg <sup>2+</sup> and Ca <sup>2+</sup> ), pH 7.4, 150 mM NaCl, 0.02 % sodium azide and 50 % glycerol.
Preservative:	Sodium azide
Precaution of Use:	This product contains sodium azide: a POISONOUS AND HAZARDOUS SUBSTANCE which should be handled by trained staff only.
Storage:	-20 °C
Storage Comment:	Stable at -20°C for at least 1 year.
Expiry Date:	12 months



### Western Blotting

**Image 1.** Western blot analysis of extracts from HepG2 cells, using DYR1A Antibody. The lane on the right is treated with the synthesized peptide.



### Immunofluorescence

**Image 2.** Immunofluorescence analysis of HepG2 cells, using DYR1A Antibody. The picture on the right is treated with the synthesized peptide.