

Datasheet for ABIN1533893
anti-HLX antibody (AA 321-370)[Go to Product page](#)

2 Images

Overview

Quantity:	100 µg
Target:	HLX
Binding Specificity:	AA 321-370
Reactivity:	Human, Mouse, Rat
Host:	Rabbit
Clonality:	Polyclonal
Conjugate:	This HLX antibody is un-conjugated
Application:	Western Blotting (WB), ELISA, Immunofluorescence (IF)

Product Details

Immunogen:	The antiserum was produced against synthesized peptide derived from human HLX1.
Isotype:	IgG
Specificity:	HLX1 Antibody detects endogenous levels of total HLX1 protein.
Purification:	The antibody was purified from rabbit antiserum by affinity-chromatography using immunogen.
Purity:	> 95 %

Target Details

Target:	HLX
Alternative Name:	HLX1 (HLX Products)
Background:	Synonyms: H2.0-like homeobox protein, Homeobox protein HB24, Homeobox protein HLX1 ,

Target Details

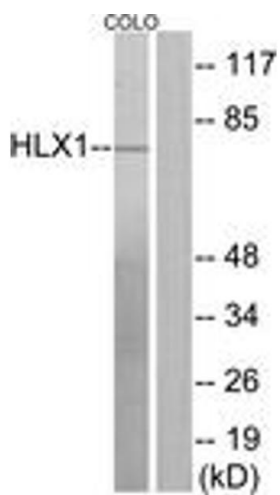
	HLX , HLX1 NCBI Gene Symbol: HLX1
Molecular Weight:	50 kDa
Gene ID:	3142
OMIM:	142995
UniProt:	Q14774
Pathways:	Positive Regulation of Immune Effector Process

Application Details

Application Notes:	WB: 1:500~1:1000 IF: 1:100~1:500 ELISA: 1:10000
Comment:	Unigene-Number: Hs.74870 (NCBI Gene Symbol: HLX1)
Restrictions:	For Research Use only

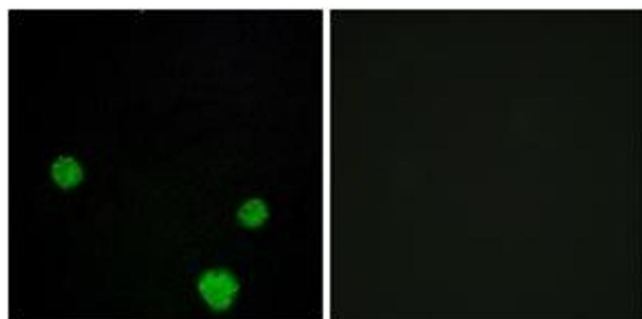
Handling

Format:	Liquid
Concentration:	1 mg/mL
Buffer:	phosphate buffered saline (without Mg ²⁺ and Ca ²⁺), pH 7.4, 150 mM NaCl, 0.02 % sodium azide and 50 % glycerol.
Preservative:	Sodium azide
Precaution of Use:	This product contains sodium azide: a POISONOUS AND HAZARDOUS SUBSTANCE which should be handled by trained staff only.
Storage:	-20 °C
Storage Comment:	Stable at -20°C for at least 1 year.
Expiry Date:	12 months



Western Blotting

Image 1. Western blot analysis of extracts from COLO205 cells, using HLX1 Antibody. The lane on the right is treated with the synthesized peptide.



Immunofluorescence

Image 2. Immunofluorescence analysis of MCF7 cells, using HLX1 Antibody. The picture on the right is treated with the synthesized peptide.