



[Go to Product page](#)

Datasheet for ABIN1533894  
**anti-CHD4 antibody (AA 571-620)**

2 Images

### Overview

Quantity:	100 µg
Target:	CHD4
Binding Specificity:	AA 571-620
Reactivity:	Human, Mouse
Host:	Rabbit
Clonality:	Polyclonal
Application:	ELISA, Immunohistochemistry (IHC), Immunofluorescence (IF)

### Product Details

Immunogen:	The antiserum was produced against synthesized peptide derived from human CHD4.
Isotype:	IgG
Specificity:	CHD4 Antibody detects endogenous levels of total CHD4 protein.
Purification:	The antibody was purified from rabbit antiserum by affinity-chromatography using immunogen.
Purity:	> 95 %

### Target Details

Target:	CHD4
Alternative Name:	CHD4 ( <a href="#">CHD4 Products</a> )
Background:	Synonyms: Chromodomain-helicase-DNA-binding protein 4, ATP-dependent helicase CHD4, CHD-4, Mi-2 autoantigen 218 kDa protein, Mi2-beta

## Target Details

---

NCBI Gene Symbol: CHD4

Molecular Weight: 217 kDa

Gene ID: 1108

OMIM: 603277

UniProt: [Q14839](#)

## Application Details

---

Application Notes: IHC: 1:50~1:100 IF: 1:100~1:500 ELISA: 1:20000

Comment: Unigene-Number: Hs.162233 (NCBI Gene Symbol: CHD4)

Restrictions: For Research Use only

## Handling

---

Format: Liquid

Concentration: 1 mg/mL

Buffer: phosphate buffered saline (without Mg<sup>2+</sup> and Ca<sup>2+</sup>), pH 7.4, 150 mM NaCl, 0.02 % sodium azide and 50 % glycerol.

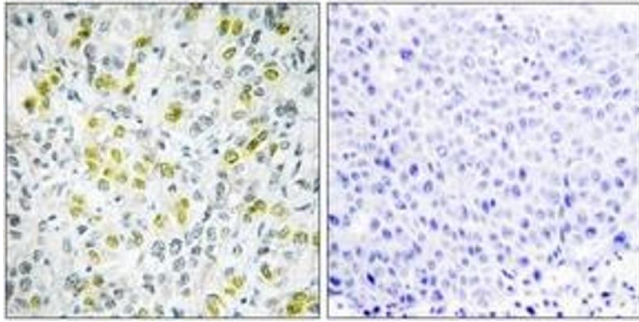
Preservative: Sodium azide

Precaution of Use: This product contains sodium azide: a POISONOUS AND HAZARDOUS SUBSTANCE which should be handled by trained staff only.

Storage: -20 °C

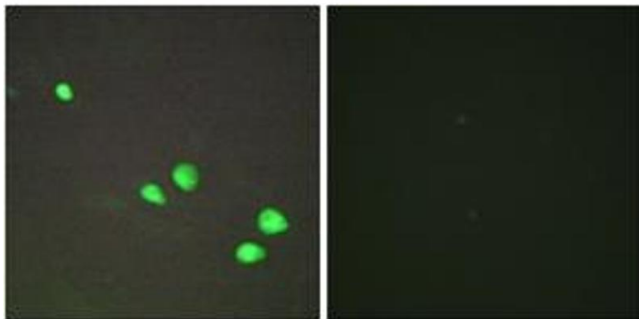
Storage Comment: Stable at -20°C for at least 1 year.

Expiry Date: 12 months



### Immunohistochemistry

**Image 1.** Immunohistochemistry analysis of paraffin-embedded human liver carcinoma tissue, using CHD4 Antibody. The picture on the right is treated with the synthesized peptide.



### Immunofluorescence

**Image 2.** Immunofluorescence analysis of HepG2 cells, using CHD4 Antibody. The picture on the right is treated with the synthesized peptide.