

Datasheet for ABIN1533913
anti-TEAD2 antibody (AA 71-120)[Go to Product page](#)

2 Images

Overview

Quantity:	100 µg
Target:	TEAD2
Binding Specificity:	AA 71-120
Reactivity:	Human, Mouse
Host:	Rabbit
Clonality:	Polyclonal
Conjugate:	This TEAD2 antibody is un-conjugated
Application:	ELISA, Immunohistochemistry (IHC), Immunofluorescence (IF)

Product Details

Immunogen:	The antiserum was produced against synthesized peptide derived from human TEAD2.
Isotype:	IgG
Specificity:	TEAD2 Antibody detects endogenous levels of total TEAD2 protein.
Purification:	The antibody was purified from rabbit antiserum by affinity-chromatography using immunogen.
Purity:	> 95 %

Target Details

Target:	TEAD2
Alternative Name:	TEAD2 (TEAD2 Products)
Background:	Synonyms: Transcriptional enhancer factor TEF-4, TEA domain family member 2, TEAD-2, TEF4

Target Details

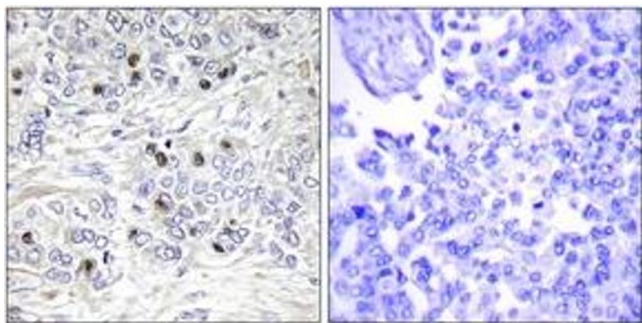
	NCBI Gene Symbol: TEAD2
Molecular Weight:	49 kDa
Gene ID:	8463
OMIM:	601729
UniProt:	Q15562
Pathways:	Regulation of Lipid Metabolism by PPARalpha , Tube Formation

Application Details

Application Notes:	IHC: 1:50~1:100 IF: 1:100~1:500 ELISA: 1:5000
Comment:	Unigene-Number: Hs.515534 (NCBI Gene Symbol: TEAD2)
Restrictions:	For Research Use only

Handling

Format:	Liquid
Concentration:	1 mg/mL
Buffer:	phosphate buffered saline (without Mg ²⁺ and Ca ²⁺), pH 7.4, 150 mM NaCl, 0.02 % sodium azide and 50 % glycerol.
Preservative:	Sodium azide
Precaution of Use:	This product contains sodium azide: a POISONOUS AND HAZARDOUS SUBSTANCE which should be handled by trained staff only.
Storage:	-20 °C
Storage Comment:	Stable at -20°C for at least 1 year.
Expiry Date:	12 months



Immunohistochemistry

Image 1. Immunohistochemistry analysis of paraffin-embedded human breast carcinoma tissue, using TEAD2 Antibody. The picture on the right is treated with the synthesized peptide.



Immunofluorescence

Image 2. Immunofluorescence analysis of HepG2 cells, using TEAD2 Antibody. The picture on the right is treated with the synthesized peptide.