

Datasheet for ABIN1533917
anti-MED1 antibody (AA 641-690)



[Go to Product page](#)

2 Images

Overview

Quantity:	100 µL
Target:	MED1
Binding Specificity:	AA 641-690
Reactivity:	Human, Mouse
Host:	Rabbit
Clonality:	Polyclonal
Conjugate:	This MED1 antibody is un-conjugated
Application:	Western Blotting (WB), ELISA, Immunohistochemistry (IHC)

Product Details

Immunogen:	The antiserum was produced against synthesized peptide derived from human MED1.
Isotype:	IgG
Specificity:	MED1 Antibody detects endogenous levels of total MED1 protein.
Purification:	The antibody was purified from rabbit antiserum by affinity-chromatography using immunogen.
Purity:	> 95 %

Target Details

Target:	MED1
Alternative Name:	MED1 (MED1 Products)
Background:	Synonyms: Mediator complex subunit 1, Peroxisome proliferator-activated receptor-binding

Target Details

protein, PBP, PPAR-binding protein, Thyroid hormone receptor-associated protein complex 220 kDa component, Trap220, Thyroid receptor-interacting protein 2, TRIP-2, p53 regulator
NCBI Gene Symbol: MED1

Molecular Weight: 168 kDa

Gene ID: 5469

OMIM: 604311

UniProt: [Q15648](#)

Pathways: [Nuclear Receptor Transcription Pathway](#), [Intracellular Steroid Hormone Receptor Signaling Pathway](#), [Regulation of Intracellular Steroid Hormone Receptor Signaling](#), [Nuclear Hormone Receptor Binding](#), [Chromatin Binding](#), [Regulation of Lipid Metabolism by PPARalpha](#)

Application Details

Application Notes: WB: 1:500~1:1000 IHC: 1:50~1:100 ELISA: 1:10000

Comment: Unigene-Number: Hs.643754 (NCBI Gene Symbol: MED1)

Restrictions: For Research Use only

Handling

Format: Liquid

Concentration: 1 mg/mL

Buffer: phosphate buffered saline (without Mg²⁺ and Ca²⁺), pH 7.4, 150 mM NaCl, 0.02 % sodium azide and 50 % glycerol.

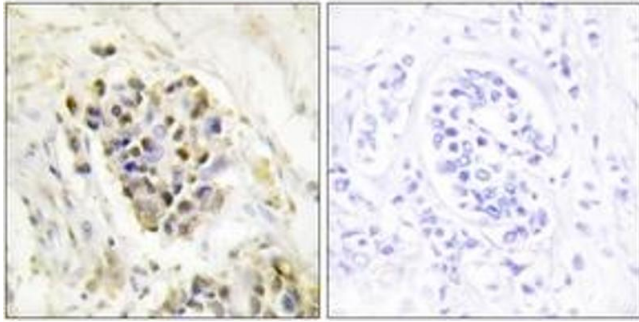
Preservative: Sodium azide

Precaution of Use: This product contains sodium azide: a POISONOUS AND HAZARDOUS SUBSTANCE which should be handled by trained staff only.

Storage: -20 °C

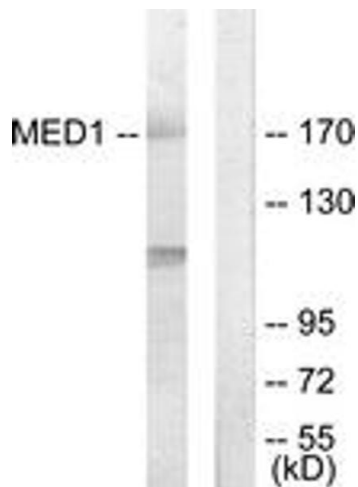
Storage Comment: Stable at -20°C for at least 1 year.

Expiry Date: 12 months



Immunohistochemistry

Image 1. Immunohistochemistry analysis of paraffin-embedded human breast carcinoma tissue, using MED1 Antibody. The picture on the right is treated with the synthesized peptide.



Western Blotting

Image 2. Western blot analysis of extracts from Jurkat cells, using MED1 Antibody. The lane on the right is treated with the synthesized peptide.