

Datasheet for ABIN1533919
anti-RHOH antibody (AA 141-190)

2 Images

[Go to Product page](#)

Overview

Quantity:	100 µg
Target:	RHOH
Binding Specificity:	AA 141-190
Reactivity:	Human, Mouse, Rat
Host:	Rabbit
Clonality:	Polyclonal
Application:	Western Blotting (WB), ELISA, Immunofluorescence (IF)

Product Details

Immunogen:	The antiserum was produced against synthesized peptide derived from human RhoH.
Isotype:	IgG
Specificity:	RhoH Antibody detects endogenous levels of total RhoH protein.
Purification:	The antibody was purified from rabbit antiserum by affinity-chromatography using immunogen.
Purity:	> 95 %

Target Details

Target:	RHOH
Alternative Name:	RhoH (RHOH Products)
Background:	Synonyms: GTP-binding protein TTF, Rho-related GTP-binding protein RhoH, RHOH, ARHH, TTF NCBI Gene Symbol: RhoH

Target Details

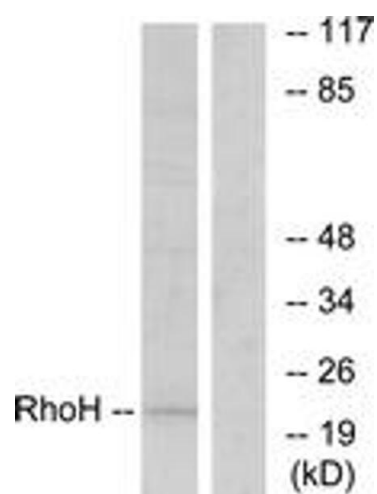
Molecular Weight:	21 kDa
Gene ID:	399
OMIM:	602037
UniProt:	Q15669

Application Details

Application Notes:	WB: 1:500~1:1000 IF: 1:100~1:500 ELISA: 1:5000
Comment:	Unigene-Number: Hs.654594 (NCBI Gene Symbol: RhoH)
Restrictions:	For Research Use only

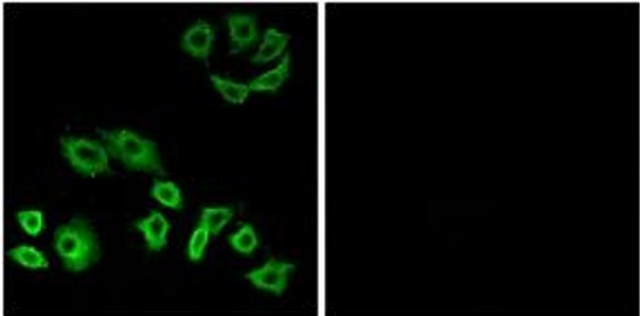
Handling

Format:	Liquid
Concentration:	1 mg/mL
Buffer:	phosphate buffered saline (without Mg ²⁺ and Ca ²⁺), pH 7.4, 150 mM NaCl, 0.02 % sodium azide and 50 % glycerol.
Preservative:	Sodium azide
Precaution of Use:	This product contains sodium azide: a POISONOUS AND HAZARDOUS SUBSTANCE which should be handled by trained staff only.
Storage:	-20 °C
Storage Comment:	Stable at -20°C for at least 1 year.
Expiry Date:	12 months



Western Blotting

Image 1. Western blot analysis of extracts from HT-29 cells, using RhoH Antibody. The lane on the right is treated with the synthesized peptide.



Immunofluorescence

Image 2. Immunofluorescence analysis of A549 cells, using RhoH Antibody. The picture on the right is treated with the synthesized peptide.