



[Go to Product page](#)

Datasheet for ABIN1533921

## anti-TSC22D1 antibody (AA 71-120)

### 3 Images

#### Overview

Quantity:	100 µL
Target:	TSC22D1
Binding Specificity:	AA 71-120
Reactivity:	Human, Rat, Mouse
Host:	Rabbit
Clonality:	Polyclonal
Conjugate:	This TSC22D1 antibody is un-conjugated
Application:	Western Blotting (WB), ELISA, Immunohistochemistry (IHC), Immunofluorescence (IF)

#### Product Details

Immunogen:	The antiserum was produced against synthesized peptide derived from human TSC22D1.
Isotype:	IgG
Specificity:	TSC22D1 Antibody detects endogenous levels of total TSC22D1 protein.
Purification:	The antibody was purified from rabbit antiserum by affinity-chromatography using immunogen.
Purity:	> 95 %

#### Target Details

Target:	TSC22D1
Alternative Name:	TSC22D1 ( <a href="#">TSC22D1 Products</a> )
Background:	Synonyms: TSC22 domain family protein 1, Transforming growth factor beta-1-induced

## Target Details

---

transcript 4 protein, Regulatory protein TSC-22, TGFB-stimulated clone 22 homolog, Cerebral protein 2, TSC22D1, KIAA1994, TGFB114, TSC22  
NCBI Gene Symbol: TSC22D1

Molecular Weight: 109 kDa

Gene ID: 8848

OMIM: 607715

UniProt: [Q15714](#)

## Application Details

---

Application Notes: WB: 1:500~1:1000 IHC: 1:50~1:100 IF: 1:100~1:500 ELISA: 1:20000

Comment: Unigene-Number: Hs.507916 (NCBI Gene Symbol: TSC22D1)

Restrictions: For Research Use only

## Handling

---

Format: Liquid

Concentration: 1 mg/mL

Buffer: phosphate buffered saline (without Mg<sup>2+</sup> and Ca<sup>2+</sup>), pH 7.4, 150 mM NaCl, 0.02 % sodium azide and 50 % glycerol.

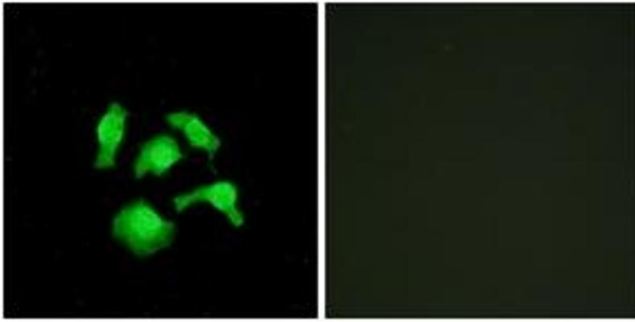
Preservative: Sodium azide

Precaution of Use: This product contains sodium azide: a POISONOUS AND HAZARDOUS SUBSTANCE which should be handled by trained staff only.

Storage: -20 °C

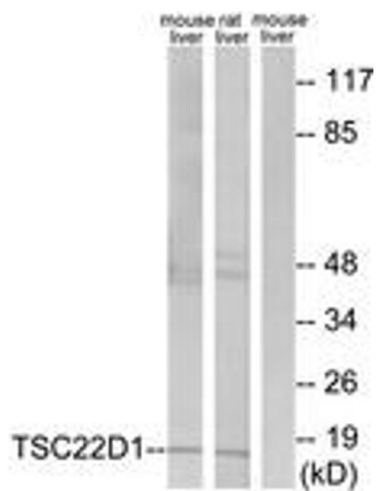
Storage Comment: Stable at -20°C for at least 1 year.

Expiry Date: 12 months



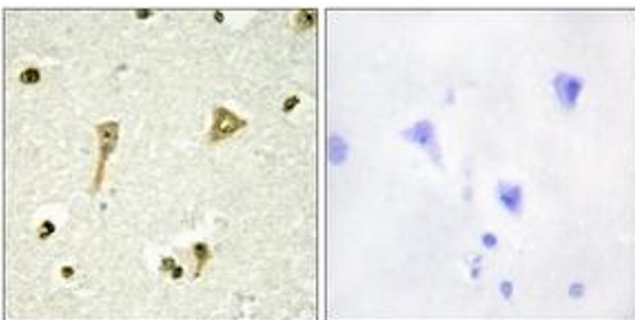
### Immunofluorescence

**Image 1.** Immunofluorescence analysis of HepG2 cells, using TSC22D1 Antibody. The picture on the right is treated with the synthesized peptide.



### Western Blotting

**Image 2.** Western blot analysis of extracts from mouse liver/rat liver cells, using TSC22D1 Antibody. The lane on the right is treated with the synthesized peptide.



### Immunohistochemistry

**Image 3.** Immunohistochemistry analysis of paraffin-embedded human brain tissue, using TSC22D1 Antibody. The picture on the right is treated with the synthesized peptide.