

Datasheet for ABIN1533922
anti-NAB2 antibody (AA 261-310)

2 Images

[Go to Product page](#)

Overview

Quantity:	100 µg
Target:	NAB2
Binding Specificity:	AA 261-310
Reactivity:	Human, Mouse
Host:	Rabbit
Clonality:	Polyclonal
Conjugate:	This NAB2 antibody is un-conjugated
Application:	Western Blotting (WB), Immunohistochemistry (IHC), ELISA

Product Details

Immunogen:	The antiserum was produced against synthesized peptide derived from human NAB2.
Isotype:	IgG
Specificity:	NAB2 Antibody detects endogenous levels of total NAB2 protein.
Purification:	The antibody was purified from rabbit antiserum by affinity-chromatography using immunogen.
Purity:	> 95 %

Target Details

Target:	NAB2
Alternative Name:	NAB2 (NAB2 Products)
Background:	Synonyms: EGR-1-binding protein 2, MADER, Melanoma- associated delayed early response

Target Details

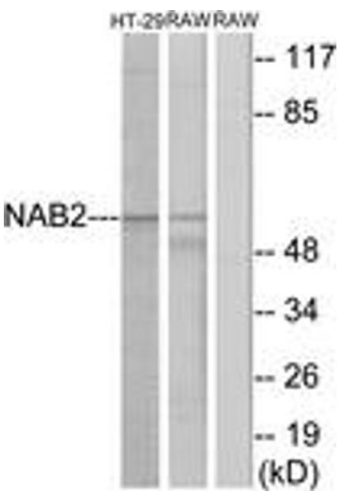
	protein, NGFI-A-binding protein 2, NCBI Gene Symbol: NAB2
Molecular Weight:	56 kDa
Gene ID:	4665
OMIM:	602381
UniProt:	Q15742

Application Details

Application Notes:	WB: 1:500~1:1000 IHC: 1:50~1:100 ELISA: 1:10000
Comment:	Unigene-Number: Hs.159223 (NCBI Gene Symbol: NAB2)
Restrictions:	For Research Use only

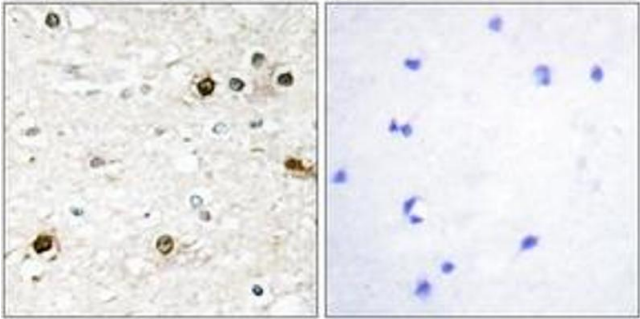
Handling

Format:	Liquid
Concentration:	1 mg/mL
Buffer:	phosphate buffered saline (without Mg ²⁺ and Ca ²⁺), pH 7.4, 150 mM NaCl, 0.02 % sodium azide and 50 % glycerol.
Preservative:	Sodium azide
Precaution of Use:	This product contains sodium azide: a POISONOUS AND HAZARDOUS SUBSTANCE which should be handled by trained staff only.
Storage:	-20 °C
Storage Comment:	Stable at -20°C for at least 1 year.
Expiry Date:	12 months



Western Blotting

Image 1. Western blot analysis of extracts from HT-29/RAW264.7 cells, using NAB2 Antibody. The lane on the right is treated with the synthesized peptide.



Immunohistochemistry

Image 2. Immunohistochemistry analysis of paraffin-embedded human brain tissue, using NAB2 Antibody. The picture on the right is treated with the synthesized peptide.