



[Go to Product page](#)

Datasheet for ABIN1533923

anti-SPR1 antibody (AA 281-330)

1 Image

Overview

Quantity:	100 µg
Target:	SPR1 (PSORS1C2)
Binding Specificity:	AA 281-330
Reactivity:	Human, Mouse
Host:	Rabbit
Clonality:	Polyclonal
Conjugate:	This SPR1 antibody is un-conjugated
Application:	ELISA, Western Blotting (WB)

Product Details

Immunogen:	The antiserum was produced against synthesized peptide derived from human SPR1.
Isotype:	IgG
Specificity:	SPR1 Antibody detects endogenous levels of total SPR1 protein.
Purification:	The antibody was purified from rabbit antiserum by affinity-chromatography using immunogen.
Purity:	> 95 %

Target Details

Target:	SPR1 (PSORS1C2)
Alternative Name:	SPR1 (PSORS1C2 Products)
Background:	Synonyms: Ovarian cancer G-protein coupled receptor 1, OGR-1, G-protein coupled receptor 68,

Target Details

GPR12A, GPR68
NCBI Gene Symbol: SPR1

Molecular Weight: 41 kDa

Gene ID: 8111

OMIM: 601404

UniProt: [Q15743](#)

Application Details

Application Notes: WB: 1:500~1:1000 ELISA: 1:5000

Comment: Unigene-Number: Hs.8882 (NCBI Gene Symbol: SPR1)

Restrictions: For Research Use only

Handling

Format: Liquid

Concentration: 1 mg/mL

Buffer: phosphate buffered saline (without Mg²⁺ and Ca²⁺), pH 7.4, 150 mM NaCl, 0.02 % sodium azide and 50 % glycerol.

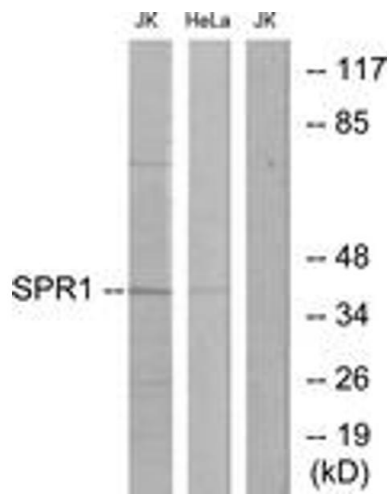
Preservative: Sodium azide

Precaution of Use: This product contains sodium azide: a POISONOUS AND HAZARDOUS SUBSTANCE which should be handled by trained staff only.

Storage: -20 °C

Storage Comment: Stable at -20°C for at least 1 year.

Expiry Date: 12 months



Western Blotting

Image 1. Western blot analysis of extracts from Jurkat/HeLa cells, using SPR1 Antibody. The lane on the right is treated with the synthesized peptide.