

Datasheet for ABIN1533935
anti-DGKD antibody (AA 41-90)



[Go to Product page](#)

1 Image

Overview

Quantity:	100 µg
Target:	DGKD
Binding Specificity:	AA 41-90
Reactivity:	Human
Host:	Rabbit
Clonality:	Polyclonal
Conjugate:	This DGKD antibody is un-conjugated
Application:	Western Blotting (WB), ELISA

Product Details

Immunogen:	The antiserum was produced against synthesized peptide derived from human DGKD.
Isotype:	IgG
Specificity:	DGKD Antibody detects endogenous levels of total DGKD protein.
Purification:	The antibody was purified from rabbit antiserum by affinity-chromatography using immunogen.
Purity:	> 95 %

Target Details

Target:	DGKD
Alternative Name:	DGKD (DGKD Products)
Background:	Synonyms: Diglyceride kinase delta, DGK-delta, DAG kinase delta, 130 kDa diacylglycerol kinase

Target Details

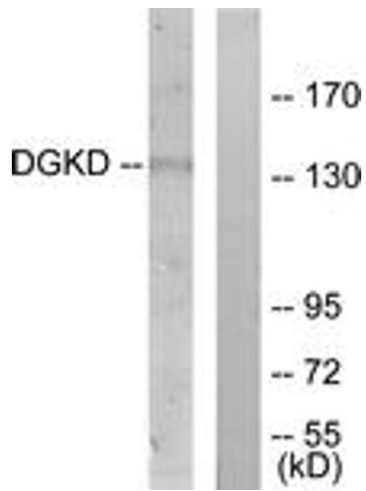
	NCBI Gene Symbol: DGKD
Molecular Weight:	134 kDa
Gene ID:	8527
OMIM:	601826
UniProt:	Q16760
Pathways:	EGFR Signaling Pathway

Application Details

Application Notes:	WB: 1:500~1:1000 ELISA: 1:20000
Comment:	Unigene-Number: Hs.471675, Hs.610488 (NCBI Gene Symbol: DGKD)
Restrictions:	For Research Use only

Handling

Format:	Liquid
Concentration:	1 mg/mL
Buffer:	phosphate buffered saline (without Mg ²⁺ and Ca ²⁺), pH 7.4, 150 mM NaCl, 0.02 % sodium azide and 50 % glycerol.
Preservative:	Sodium azide
Precaution of Use:	This product contains sodium azide: a POISONOUS AND HAZARDOUS SUBSTANCE which should be handled by trained staff only.
Storage:	-20 °C
Storage Comment:	Stable at -20°C for at least 1 year.
Expiry Date:	12 months



Western Blotting

Image 1. Western blot analysis of extracts from HuvEc cells, using DGKD Antibody. The lane on the right is treated with the synthesized peptide.