

Datasheet for ABIN1533947

anti-Shugoshin antibody (AA 271-320)



[Go to Product page](#)

1 Image

Overview

Quantity:	100 µL
Target:	Shugoshin (SGOL1)
Binding Specificity:	AA 271-320
Reactivity:	Human
Host:	Rabbit
Clonality:	Polyclonal
Conjugate:	This Shugoshin antibody is un-conjugated
Application:	ELISA, Western Blotting (WB)

Product Details

Immunogen:	The antiserum was produced against synthesized peptide derived from human SGOL1.
Isotype:	IgG
Specificity:	SGOL1 Antibody detects endogenous levels of total SGOL1 protein.
Purification:	The antibody was purified from rabbit antiserum by affinity-chromatography using immunogen.
Purity:	> 95 %

Target Details

Target:	Shugoshin (SGOL1)
Alternative Name:	SGOL1 (SGOL1 Products)
Background:	Synonyms: hSgo1, Serologically defined breast cancer antigen NY-BR-85, SGOL1, Shugoshin-

Target Details

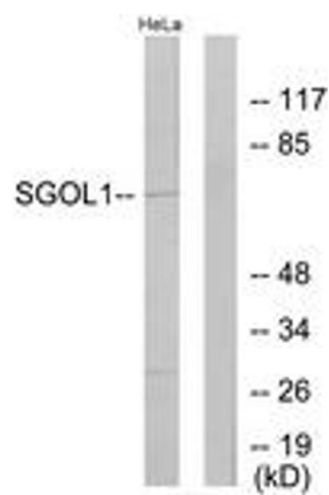
	like 1
	NCBI Gene Symbol: SGOL1
Molecular Weight:	64 kDa
Gene ID:	151648
OMIM:	609168
UniProt:	Q5FBB7
Pathways:	Maintenance of Protein Location

Application Details

Application Notes:	WB: 1:500~1:1000 ELISA: 1:20000
Comment:	Unigene-Number: Hs.105153 (NCBI Gene Symbol: SGOL1)
Restrictions:	For Research Use only

Handling

Format:	Liquid
Concentration:	1 mg/mL
Buffer:	phosphate buffered saline (without Mg ²⁺ and Ca ²⁺), pH 7.4, 150 mM NaCl, 0.02 % sodium azide and 50 % glycerol.
Preservative:	Sodium azide
Precaution of Use:	This product contains sodium azide: a POISONOUS AND HAZARDOUS SUBSTANCE which should be handled by trained staff only.
Storage:	-20 °C
Storage Comment:	Stable at -20°C for at least 1 year.
Expiry Date:	12 months



Western Blotting

Image 1. Western blot analysis of extracts from HeLa cells, using SGOL1 Antibody. The lane on the right is treated with the synthesized peptide.