

Datasheet for ABIN1533948
anti-DGKK antibody (AA 1221-1270)[Go to Product page](#)

2 Images

Overview

Quantity:	100 µg
Target:	DGKK
Binding Specificity:	AA 1221-1270
Reactivity:	Human
Host:	Rabbit
Clonality:	Polyclonal
Conjugate:	This DGKK antibody is un-conjugated
Application:	ELISA, Immunohistochemistry (IHC), Immunofluorescence (IF)

Product Details

Immunogen:	The antiserum was produced against synthesized peptide derived from human DGKK.
Isotype:	IgG
Specificity:	DGKK Antibody detects endogenous levels of total DGKK protein.
Purification:	The antibody was purified from rabbit antiserum by affinity-chromatography using immunogen.
Purity:	> 95 %

Target Details

Target:	DGKK
Alternative Name:	DGKK (DGKK Products)
Background:	Synonyms: Diglyceride kinase kappa, DGK-kappa, DAG kinase kappa, 142 kDa diacylglycerol

Target Details

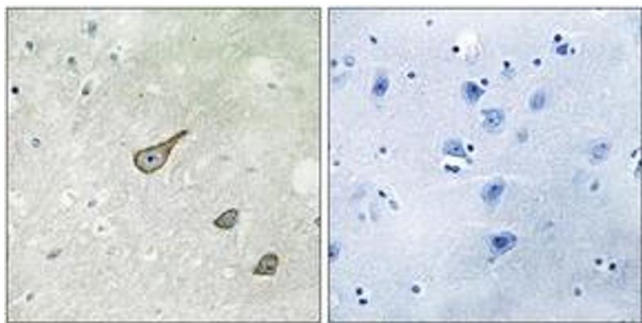
	kinase NCBI Gene Symbol: DGKK
Molecular Weight:	141 kDa
Gene ID:	139189
UniProt:	Q5KSL6

Application Details

Application Notes:	IHC: 1:50~1:100 IF: 1:100~1:500 ELISA: 1:5000
Comment:	Unigene-Number: Hs.631770 (NCBI Gene Symbol: DGKK)
Restrictions:	For Research Use only

Handling

Format:	Liquid
Concentration:	1 mg/mL
Buffer:	phosphate buffered saline (without Mg ²⁺ and Ca ²⁺), pH 7.4, 150 mM NaCl, 0.02 % sodium azide and 50 % glycerol.
Preservative:	Sodium azide
Precaution of Use:	This product contains sodium azide: a POISONOUS AND HAZARDOUS SUBSTANCE which should be handled by trained staff only.
Storage:	-20 °C
Storage Comment:	Stable at -20°C for at least 1 year.
Expiry Date:	12 months



Immunohistochemistry

Image 1. Immunohistochemistry analysis of paraffin-embedded human brain tissue, using DGKK Antibody. The picture on the right is treated with the synthesized peptide.



Immunofluorescence

Image 2. Immunofluorescence analysis of COS7 cells, using DGKK Antibody. The picture on the right is treated with the synthesized peptide.