



[Go to Product page](#)

Datasheet for ABIN1533958
anti-LDOC1L antibody (AA 141-190)

1 Image

Overview

Quantity:	100 µg
Target:	LDOC1L
Binding Specificity:	AA 141-190
Reactivity:	Human, Mouse
Host:	Rabbit
Clonality:	Polyclonal
Conjugate:	This LDOC1L antibody is un-conjugated
Application:	Western Blotting (WB), ELISA

Product Details

Immunogen:	The antiserum was produced against synthesized peptide derived from human LDOC1L.
Isotype:	IgG
Specificity:	LDOC1L Antibody detects endogenous levels of total LDOC1L protein.
Purification:	The antibody was purified from rabbit antiserum by affinity-chromatography using immunogen.
Purity:	> 95 %

Target Details

Target:	LDOC1L
Alternative Name:	LDOC1L (LDOC1L Products)
Background:	Synonyms: Leucine zipper protein down-regulated in cancer cells-like, Mammalian

Target Details

retrotransposon-derived protein 6

NCBI Gene Symbol: LDOC1L

Molecular Weight: 26 kDa

Gene ID: 84247

UniProt: [Q6ICC9](#)

Application Details

Application Notes: WB: 1:500~1:1000 ELISA: 1:1000

Comment: Unigene-Number: Hs.724601 (NCBI Gene Symbol: LDOC1L)

Restrictions: For Research Use only

Handling

Format: Liquid

Concentration: 1 mg/mL

Buffer: phosphate buffered saline (without Mg²⁺ and Ca²⁺), pH 7.4, 150 mM NaCl, 0.02 % sodium azide and 50 % glycerol.

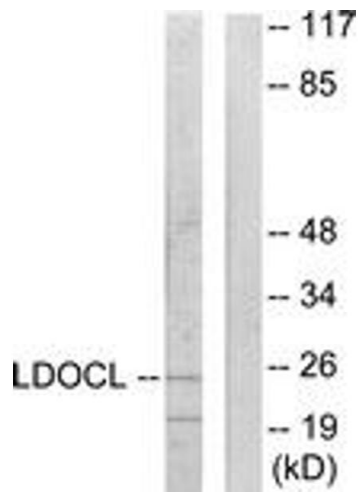
Preservative: Sodium azide

Precaution of Use: This product contains sodium azide: a POISONOUS AND HAZARDOUS SUBSTANCE which should be handled by trained staff only.

Storage: -20 °C

Storage Comment: Stable at -20°C for at least 1 year.

Expiry Date: 12 months



Western Blotting

Image 1. Western blot analysis of extracts from COLO205 cells, using LDOC1L Antibody. The lane on the right is treated with the synthesized peptide.