

Datasheet for ABIN1533961
anti-PNCK antibody (AA 161-210)[Go to Product page](#)

2 Images

Overview

Quantity:	100 µg
Target:	PNCK
Binding Specificity:	AA 161-210
Reactivity:	Human, Mouse, Rat
Host:	Rabbit
Clonality:	Polyclonal
Conjugate:	This PNCK antibody is un-conjugated
Application:	Western Blotting (WB), ELISA, Immunohistochemistry (IHC)

Product Details

Immunogen:	The antiserum was produced against synthesized peptide derived from human CaMK1-beta.
Isotype:	IgG
Specificity:	CaMK1-beta Antibody detects endogenous levels of total CaMK1-beta protein.
Purification:	The antibody was purified from rabbit antiserum by affinity-chromatography using immunogen.
Purity:	> 95 %

Target Details

Target:	PNCK
Abstract:	PNCK Products
Background:	Synonyms: CaM kinase IB, CaM kinase I beta, CaMKI-beta, CaM-KI beta, Pregnancy up-

Target Details

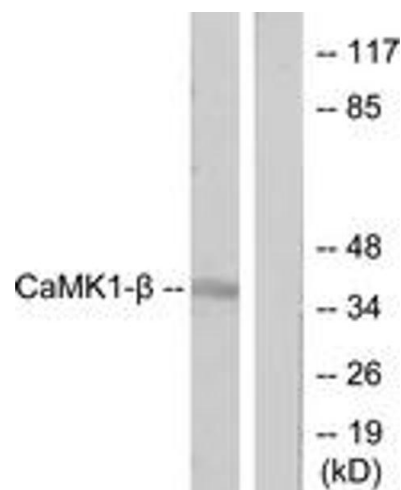
	regulated non-ubiquitously-expressed CaM kinase NCBI Gene Symbol: PNCK
Molecular Weight:	38 kDa
Gene ID:	139728
OMIM:	300680
UniProt:	Q6P2M8

Application Details

Application Notes:	WB: 1:500~1:1000 IHC: 1:50~1:100 ELISA: 1:10000
Comment:	Unigene-Number: Hs.436667 (NCBI Gene Symbol: PNCK)
Restrictions:	For Research Use only

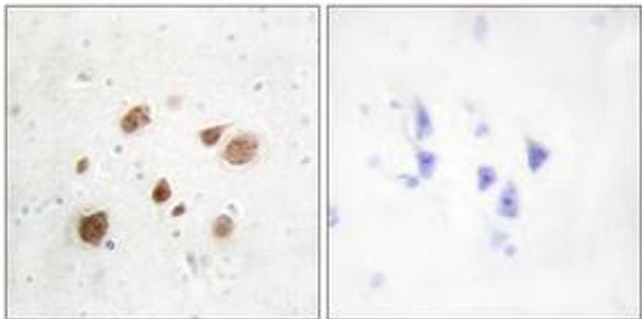
Handling

Format:	Liquid
Concentration:	1 mg/mL
Buffer:	phosphate buffered saline (without Mg ²⁺ and Ca ²⁺), pH 7.4, 150 mM NaCl, 0.02 % sodium azide and 50 % glycerol.
Preservative:	Sodium azide
Precaution of Use:	This product contains sodium azide: a POISONOUS AND HAZARDOUS SUBSTANCE which should be handled by trained staff only.
Storage:	-20 °C
Storage Comment:	Stable at -20°C for at least 1 year.
Expiry Date:	12 months



Western Blotting

Image 1. Western blot analysis of extracts from LOVO cells, treated with H₂O₂ 100uM 30', using CaMK1-beta Antibody. The lane on the right is treated with the synthesized peptide.



Immunohistochemistry

Image 2. Immunohistochemistry analysis of paraffin-embedded human brain tissue, using CaMK1-beta Antibody. The picture on the right is treated with the synthesized peptide.