

Datasheet for ABIN1533984
anti-LATH antibody (AA 71-120)[Go to Product page](#)

2 Images

Overview

Quantity:	100 µg
Target:	LATH
Binding Specificity:	AA 71-120
Reactivity:	Human
Host:	Rabbit
Clonality:	Polyclonal
Conjugate:	This LATH antibody is un-conjugated
Application:	Immunohistochemistry (IHC), ELISA, Immunofluorescence (IF)

Product Details

Immunogen:	The antiserum was produced against synthesized peptide derived from human LATH.
Isotype:	IgG
Specificity:	LATH Antibody detects endogenous levels of total LATH protein.
Purification:	The antibody was purified from rabbit antiserum by affinity-chromatography using immunogen.
Purity:	> 95 %

Target Details

Target:	LATH
Alternative Name:	LATH (LATH Products)
Background:	Synonyms: Latherin, Breast cancer and salivary gland-expressed protein, LATH, BASE

Target Details

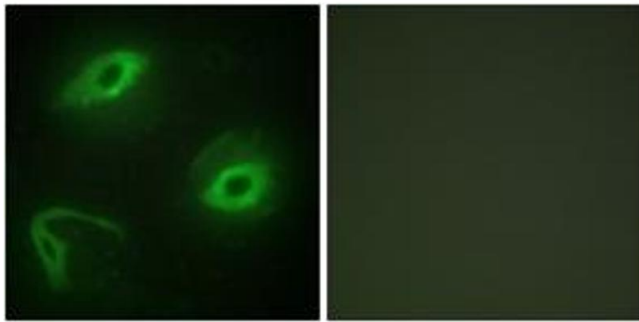
	NCBI Gene Symbol: LATH
Molecular Weight:	19 kDa
Gene ID:	607627
UniProt:	Q86YQ2

Application Details

Application Notes:	IHC: 1:50~1:100 IF: 1:100~1:500 ELISA: 1:20000
Comment:	Unigene-Number: Hs.434194 (NCBI Gene Symbol: LATH)
Restrictions:	For Research Use only

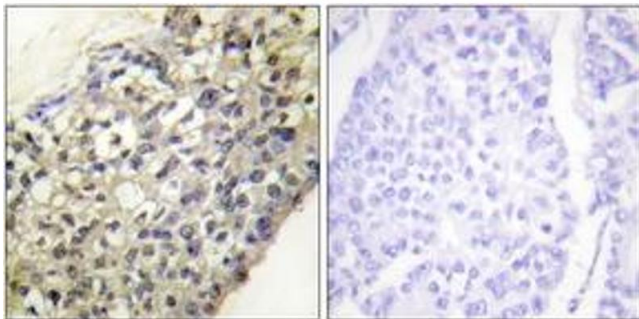
Handling

Format:	Liquid
Concentration:	1 mg/mL
Buffer:	phosphate buffered saline (without Mg2+ and Ca2+), pH 7.4, 150 mM NaCl, 0.02 % sodium azide and 50 % glycerol.
Preservative:	Sodium azide
Precaution of Use:	This product contains sodium azide: a POISONOUS AND HAZARDOUS SUBSTANCE which should be handled by trained staff only.
Storage:	-20 °C
Storage Comment:	Stable at -20°C for at least 1 year.
Expiry Date:	12 months



Immunofluorescence

Image 1. Immunofluorescence analysis of HeLa cells, using LATH Antibody. The picture on the right is treated with the synthesized peptide.



Immunohistochemistry

Image 2. Immunohistochemistry analysis of paraffin-embedded human breast carcinoma tissue, using LATH Antibody. The picture on the right is treated with the synthesized peptide.