

Datasheet for ABIN1533991
anti-TRIM59 antibody (AA 191-240)

3 Images

[Go to Product page](#)

Overview

Quantity:	100 µg
Target:	TRIM59
Binding Specificity:	AA 191-240
Reactivity:	Human, Mouse
Host:	Rabbit
Clonality:	Polyclonal
Conjugate:	This TRIM59 antibody is un-conjugated
Application:	Western Blotting (WB), ELISA, Immunohistochemistry (IHC), Immunofluorescence (IF)

Product Details

Immunogen:	The antiserum was produced against synthesized peptide derived from human TRIM59.
Isotype:	IgG
Specificity:	TRIM59 Antibody detects endogenous levels of total TRIM59 protein.
Purification:	The antibody was purified from rabbit antiserum by affinity-chromatography using immunogen.
Purity:	> 95 %

Target Details

Target:	TRIM59
Alternative Name:	TRIM59 (TRIM59 Products)
Background:	Synonyms: Tumor suppressor TSBF-1, RING finger protein 104

Target Details

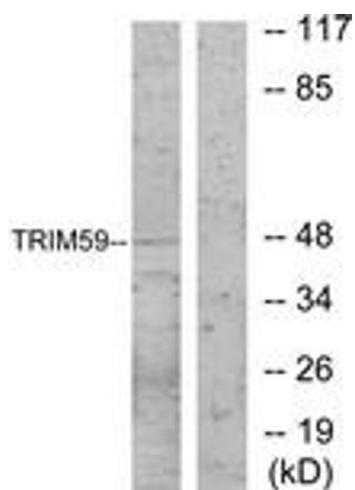
	NCBI Gene Symbol: TRIM59
Molecular Weight:	47 kDa
Gene ID:	286827
UniProt:	Q8IWR1
Pathways:	SARS-CoV-2 Protein Interactome

Application Details

Application Notes:	WB: 1:500~1:1000 IHC: 1:50~1:100 IF: 1:100~1:500 ELISA: 1:5000
Comment:	Unigene-Number: Hs.212957 (NCBI Gene Symbol: TRIM59)
Restrictions:	For Research Use only

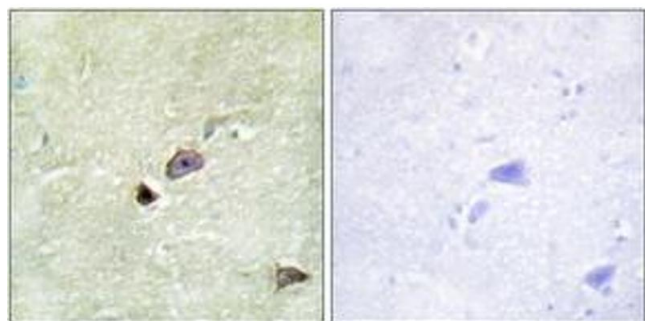
Handling

Format:	Liquid
Concentration:	1 mg/mL
Buffer:	phosphate buffered saline (without Mg ²⁺ and Ca ²⁺), pH 7.4, 150 mM NaCl, 0.02 % sodium azide and 50 % glycerol.
Preservative:	Sodium azide
Precaution of Use:	This product contains sodium azide: a POISONOUS AND HAZARDOUS SUBSTANCE which should be handled by trained staff only.
Storage:	-20 °C
Storage Comment:	Stable at -20°C for at least 1 year.
Expiry Date:	12 months



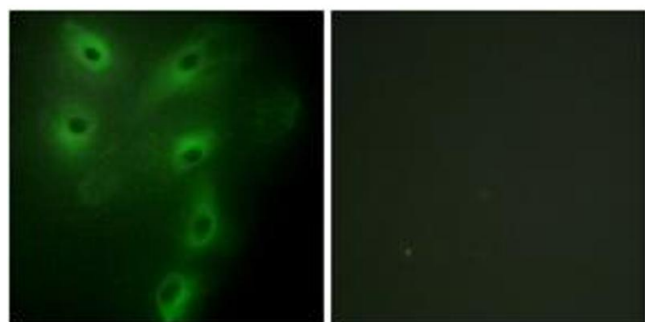
Western Blotting

Image 1. Western blot analysis of extracts from NIH-3T3 cells, using TRIM59 Antibody. The lane on the right is treated with the synthesized peptide.



Immunohistochemistry

Image 2. Immunohistochemistry analysis of paraffin-embedded human brain tissue, using TRIM59 Antibody. The picture on the right is treated with the synthesized peptide.



Immunofluorescence

Image 3. Immunofluorescence analysis of HeLa cells, using TRIM59 Antibody. The picture on the right is treated with the synthesized peptide.