

Datasheet for ABIN1533995
anti-CCRK antibody (AA 31-80)[Go to Product page](#)

2 Images

Overview

Quantity:	100 µg
Target:	CCRK (CDK20)
Binding Specificity:	AA 31-80
Reactivity:	Human, Mouse, Rat
Host:	Rabbit
Clonality:	Polyclonal
Conjugate:	This CCRK antibody is un-conjugated
Application:	Western Blotting (WB), ELISA, Immunofluorescence (IF)

Product Details

Immunogen:	The antiserum was produced against synthesized peptide derived from human CCRK.
Isotype:	IgG
Specificity:	CCRK Antibody detects endogenous levels of total CCRK protein.
Purification:	The antibody was purified from rabbit antiserum by affinity-chromatography using immunogen.
Purity:	> 95 %

Target Details

Target:	CCRK (CDK20)
Alternative Name:	CCRK (CDK20 Products)
Background:	Synonyms: Cell cycle-related kinase, Cyclin-kinase-activating kinase p42, CDK-activating kinase

Target Details

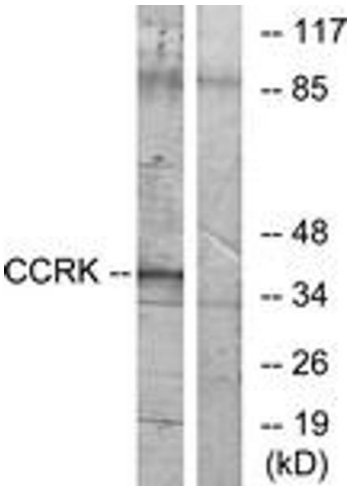
	p42, CAK-kinase p42, Cyclin-dependent protein kinase H, CCRK, CDCH NCBI Gene Symbol: CCRK
Molecular Weight:	38 kDa
Gene ID:	23552
OMIM:	610076
UniProt:	Q8IZL9

Application Details

Application Notes:	WB: 1:500~1:1000 IF: 1:100~1:500 ELISA: 1:1000
Comment:	Unigene-Number: Hs.522274 (NCBI Gene Symbol: CCRK)
Restrictions:	For Research Use only

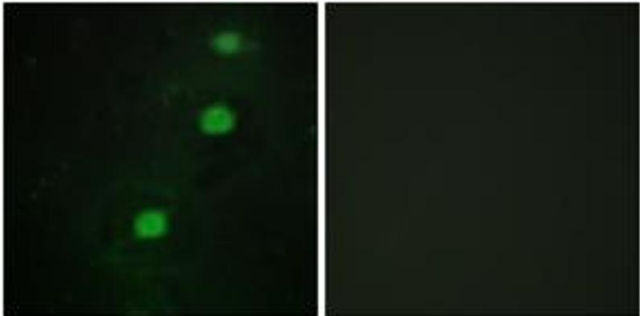
Handling

Format:	Liquid
Concentration:	1 mg/mL
Buffer:	phosphate buffered saline (without Mg ²⁺ and Ca ²⁺), pH 7.4, 150 mM NaCl, 0.02 % sodium azide and 50 % glycerol.
Preservative:	Sodium azide
Precaution of Use:	This product contains sodium azide: a POISONOUS AND HAZARDOUS SUBSTANCE which should be handled by trained staff only.
Storage:	-20 °C
Storage Comment:	Stable at -20°C for at least 1 year.
Expiry Date:	12 months



Western Blotting

Image 1. Western blot analysis of extracts from RAW264.7 cells, using CCRK Antibody. The lane on the right is treated with the synthesized peptide.



Immunofluorescence

Image 2. Immunofluorescence analysis of HuvEc cells, using CCRK Antibody. The picture on the right is treated with the synthesized peptide.