



[Go to Product page](#)

Datasheet for ABIN1534003
anti-CAMKV antibody (AA 211-260)

3 Images

Overview

Quantity:	100 µL
Target:	CAMKV
Binding Specificity:	AA 211-260
Reactivity:	Human, Mouse, Rat
Host:	Rabbit
Clonality:	Polyclonal
Conjugate:	This CAMKV antibody is un-conjugated
Application:	Western Blotting (WB), ELISA, Immunohistochemistry (IHC), Immunofluorescence (IF)

Product Details

Immunogen:	The antiserum was produced against synthesized peptide derived from human CAMK5.
Isotype:	IgG
Specificity:	CAMK5 Antibody detects endogenous levels of total CAMK5 protein.
Purification:	The antibody was purified from rabbit antiserum by affinity-chromatography using immunogen.
Purity:	> 95 %

Target Details

Target:	CAMKV
Alternative Name:	CaM Kinase-Like Vesicle-Associated (CAMKV Products)
Background:	Synonyms: CaM kinase-like vesicle-associated protein

Target Details

NCBI Gene Symbol: CAMK5

Molecular Weight: 54 kDa

Gene ID: 79012

UniProt: [Q8NCB2](#)

Application Details

Application Notes: WB: 1:500~1:1000 IHC: 1:50~1:100 IF: 1:100~1:500 ELISA: 1:5000

Comment: Unigene-Number: Hs.145156 (NCBI Gene Symbol: CAMK5)

Restrictions: For Research Use only

Handling

Format: Liquid

Concentration: 1 mg/mL

Buffer: phosphate buffered saline (without Mg²⁺ and Ca²⁺), pH 7.4, 150 mM NaCl, 0.02 % sodium azide and 50 % glycerol.

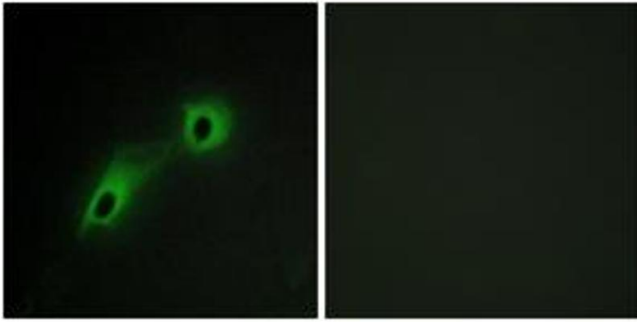
Preservative: Sodium azide

Precaution of Use: This product contains sodium azide: a POISONOUS AND HAZARDOUS SUBSTANCE which should be handled by trained staff only.

Storage: -20 °C

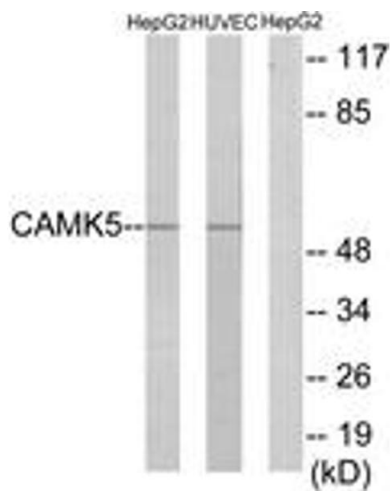
Storage Comment: Stable at -20°C for at least 1 year.

Expiry Date: 12 months



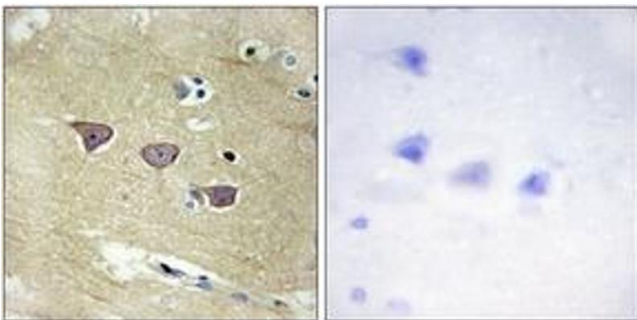
Immunofluorescence

Image 1. Immunofluorescence analysis of HeLa cells, using CAMK5 Antibody. The picture on the right is treated with the synthesized peptide.



Western Blotting

Image 2. Western blot analysis of extracts from HepG2/HuvEc cells, using CAMK5 Antibody. The lane on the right is treated with the synthesized peptide.



Immunohistochemistry

Image 3. Immunohistochemistry analysis of paraffin-embedded human brain tissue, using CAMK5 Antibody. The picture on the right is treated with the synthesized peptide.