

Datasheet for ABIN1534008
anti-PPHLN1 antibody (AA 71-120)[Go to Product page](#)

2 Images

Overview

Quantity:	100 µg
Target:	PPHLN1
Binding Specificity:	AA 71-120
Reactivity:	Human, Mouse
Host:	Rabbit
Clonality:	Polyclonal
Conjugate:	This PPHLN1 antibody is un-conjugated
Application:	Western Blotting (WB), Immunohistochemistry (IHC), ELISA

Product Details

Immunogen:	The antiserum was produced against synthesized peptide derived from human PPHLN.
Isotype:	IgG
Specificity:	PPHLN Antibody detects endogenous levels of total PPHLN protein.
Purification:	The antibody was purified from rabbit antiserum by affinity-chromatography using immunogen.
Purity:	> 95 %

Target Details

Target:	PPHLN1
Alternative Name:	PPHLN (PPHLN1 Products)
Background:	Synonyms: Gastric cancer antigen Ga50

Target Details

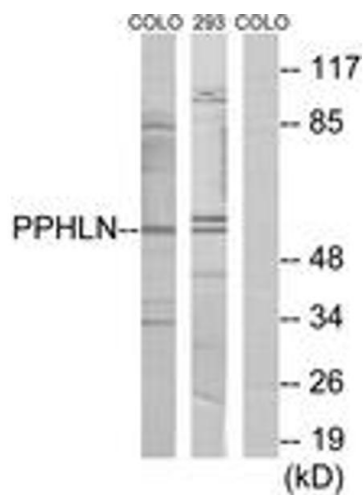
	NCBI Gene Symbol: PPHLN
Molecular Weight:	52 kDa
Gene ID:	51535
OMIM:	608150
UniProt:	Q8NEY8

Application Details

Application Notes:	WB: 1:500~1:1000 IHC: 1:50~1:100 ELISA: 1:5000
Comment:	Unigene-Number: Hs.444157 (NCBI Gene Symbol: PPHLN)
Restrictions:	For Research Use only

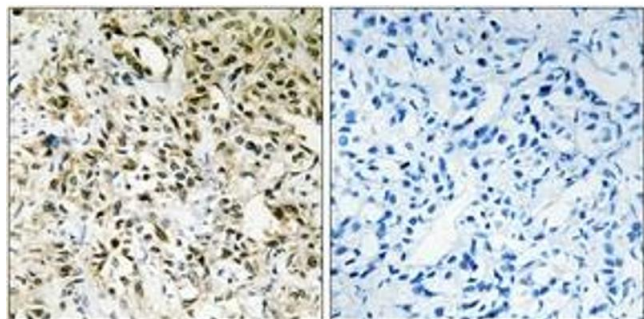
Handling

Format:	Liquid
Concentration:	1 mg/mL
Buffer:	phosphate buffered saline (without Mg ²⁺ and Ca ²⁺), pH 7.4, 150 mM NaCl, 0.02 % sodium azide and 50 % glycerol.
Preservative:	Sodium azide
Precaution of Use:	This product contains sodium azide: a POISONOUS AND HAZARDOUS SUBSTANCE which should be handled by trained staff only.
Storage:	-20 °C
Storage Comment:	Stable at -20°C for at least 1 year.
Expiry Date:	12 months



Western Blotting

Image 1. Western blot analysis of extracts from COLO/293 cells, using PPHLN Antibody. The lane on the right is treated with the synthesized peptide.



Immunohistochemistry

Image 2. Immunohistochemistry analysis of paraffin-embedded human liver carcinoma tissue, using PPHLN Antibody. The picture on the right is treated with the synthesized peptide.