

Datasheet for ABIN1534015
anti-PPP1R14C antibody (AA 51-100)[Go to Product page](#)

1 Image

Overview

Quantity:	100 µg
Target:	PPP1R14C
Binding Specificity:	AA 51-100
Reactivity:	Human, Mouse, Rat
Host:	Rabbit
Clonality:	Polyclonal
Application:	Western Blotting (WB), ELISA

Product Details

Immunogen:	The antiserum was produced against synthesized peptide derived from human PPP1R14C.
Isotype:	IgG
Specificity:	PPP1R14C Antibody detects endogenous levels of total PPP1R14C protein.
Purification:	The antibody was purified from rabbit antiserum by affinity-chromatography using immunogen.
Purity:	> 95 %

Target Details

Target:	PPP1R14C
Alternative Name:	PPP1R14C (PPP1R14C Products)
Background:	Synonyms: PKC-potentiated PP1 inhibitory protein, Kinase-enhanced PP1 inhibitor, Serologically defined breast cancer antigen NY-BR-81

Target Details

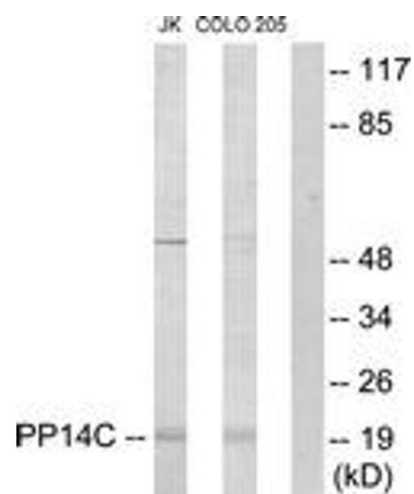
	NCBI Gene Symbol: PPP1R14C
Molecular Weight:	17 kDa
Gene ID:	81706
OMIM:	613242
UniProt:	Q8TAE6

Application Details

Application Notes:	WB: 1:500~1:1000 ELISA: 1:20000
Comment:	Unigene-Number: Hs.486798 (NCBI Gene Symbol: PPP1R14C)
Restrictions:	For Research Use only

Handling

Format:	Liquid
Concentration:	1 mg/mL
Buffer:	phosphate buffered saline (without Mg ²⁺ and Ca ²⁺), pH 7.4, 150 mM NaCl, 0.02 % sodium azide and 50 % glycerol.
Preservative:	Sodium azide
Precaution of Use:	This product contains sodium azide: a POISONOUS AND HAZARDOUS SUBSTANCE which should be handled by trained staff only.
Storage:	-20 °C
Storage Comment:	Stable at -20°C for at least 1 year.
Expiry Date:	12 months



Western Blotting

Image 1. Western blot analysis of extracts from Jurkat/COLO205 cells, using PPP1R14C Antibody. The lane on the right is treated with the synthesized peptide.