



[Go to Product page](#)

Datasheet for ABIN1534018
anti-RIN3 antibody (AA 391-440)

1 Image

Overview

Quantity:	100 µg
Target:	RIN3
Binding Specificity:	AA 391-440
Reactivity:	Human
Host:	Rabbit
Clonality:	Polyclonal
Conjugate:	This RIN3 antibody is un-conjugated
Application:	ELISA, Western Blotting (WB)

Product Details

Immunogen:	The antiserum was produced against synthesized peptide derived from human RIN3.
Isotype:	IgG
Specificity:	RIN3 Antibody detects endogenous levels of total RIN3 protein.
Purification:	The antibody was purified from rabbit antiserum by affinity-chromatography using immunogen.
Purity:	> 95 %

Target Details

Target:	RIN3
Alternative Name:	RIN3 (RIN3 Products)
Background:	Synonyms: Ras interaction/interference protein 3

Target Details

NCBI Gene Symbol: RIN3

Molecular Weight: 107 kDa

Gene ID: 79890

OMIM: 610223

UniProt: [Q8TB24](#)

Application Details

Application Notes: WB: 1:500~1:1000 ELISA: 1:10000

Comment: Unigene-Number: Hs.723268 (NCBI Gene Symbol: RIN3)

Restrictions: For Research Use only

Handling

Format: Liquid

Concentration: 1 mg/mL

Buffer: phosphate buffered saline (without Mg²⁺ and Ca²⁺), pH 7.4, 150 mM NaCl, 0.02 % sodium azide and 50 % glycerol.

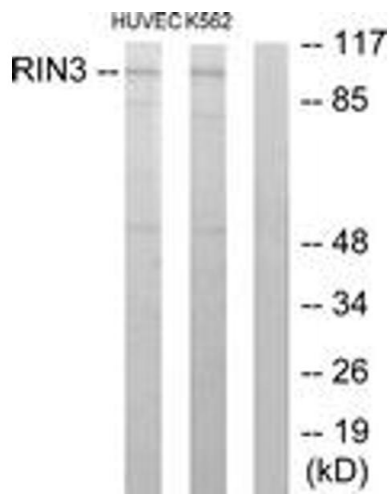
Preservative: Sodium azide

Precaution of Use: This product contains sodium azide: a POISONOUS AND HAZARDOUS SUBSTANCE which should be handled by trained staff only.

Storage: -20 °C

Storage Comment: Stable at -20°C for at least 1 year.

Expiry Date: 12 months



Western Blotting

Image 1. Western blot analysis of extracts from HUVEC/K562 cells, using RIN3 Antibody. The lane on the right is treated with the synthesized peptide.