

Datasheet for ABIN1534023  
**anti-EPS8-Like 3 antibody (AA 401-450)**[Go to Product page](#)

## 2 Images

## Overview

|                      |  |
|----------------------|--|
| Quantity:            | 100 µg   |
| Target:              | EPS8-Like 3 (EPS8L3)                                       |
| Binding Specificity: | AA 401-450   |
| Reactivity:          | Human  |
| Host:                | Rabbit   |
| Clonality:           | Polyclonal   |
| Conjugate:           | This EPS8-Like 3 antibody is un-conjugated                 |
| Application:         | ELISA, Immunohistochemistry (IHC), Immunofluorescence (IF) |

## Product Details

|               |   |
|---------------|---|
| Immunogen:    | The antiserum was produced against synthesized peptide derived from human EPS8L3.           |
| Isotype:      | IgG   |
| Specificity:  | EPS8L3 Antibody detects endogenous levels of total EPS8L3 protein.                          |
| Purification: | The antibody was purified from rabbit antiserum by affinity-chromatography using immunogen. |
| Purity:       | > 95 %  |

## Target Details

|                   |   |
|-------------------|---|
| Target:           | EPS8-Like 3 (EPS8L3)  |
| Alternative Name: | EPS8L3 ( <a href="#">EPS8L3 Products</a> )  |
| Background:       | Synonyms: Epidermal growth factor receptor pathway substrate 8-related protein 3, EPS8-like |

## Target Details

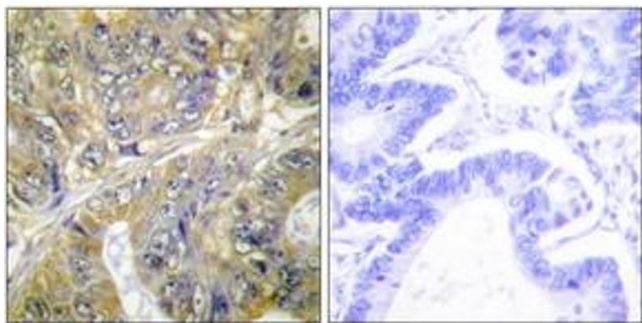
|                   |                                       |
|-------------------|---------------------------------------|
|                   | protein 3<br>NCBI Gene Symbol: EPS8L3 |
| Molecular Weight: | 66 kDa                                |
| Gene ID:          | 79574                                 |
| UniProt:          | <a href="#">Q8TE67</a>                |

## Application Details

|                    |  |
|--------------------|--|
| Application Notes: | IHC: 1:50~1:100 IF: 1:100~1:500 ELISA: 1:10000       |
| Comment:           | Unigene-Number: Hs.485352 (NCBI Gene Symbol: EPS8L3) |
| Restrictions:      | For Research Use only                                |

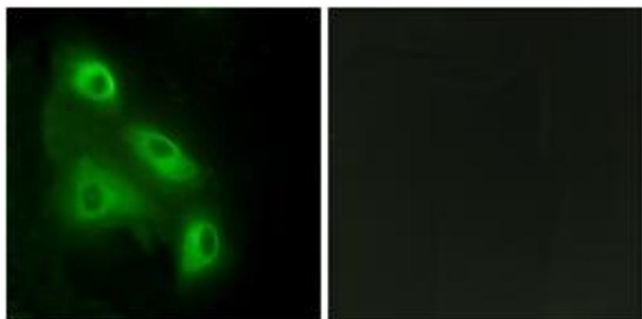
## Handling

|                    |   |
|--------------------|---|
| Format:            | Liquid  |
| Concentration:     | 1 mg/mL   |
| Buffer:            | phosphate buffered saline (without Mg <sup>2+</sup> and Ca <sup>2+</sup> ), pH 7.4, 150 mM NaCl, 0.02 % sodium azide and 50 % glycerol. |
| Preservative:      | Sodium azide  |
| Precaution of Use: | This product contains sodium azide: a POISONOUS AND HAZARDOUS SUBSTANCE which should be handled by trained staff only.                  |
| Storage:           | -20 °C  |
| Storage Comment:   | Stable at -20°C for at least 1 year.  |
| Expiry Date:       | 12 months   |



#### Immunohistochemistry

**Image 1.** Immunohistochemistry analysis of paraffin-embedded human colon carcinoma tissue, using EPS8L3 Antibody. The picture on the right is treated with the synthesized peptide.



#### Immunofluorescence

**Image 2.** Immunofluorescence analysis of HeLa cells, using EPS8L3 Antibody. The picture on the right is treated with the synthesized peptide.