



Datasheet for ABIN1534024  
**anti-EPS8-Like 1 antibody (AA 411-460)**



[Go to Product page](#)

2 Images

Overview

Quantity:	100 µL
Target:	EPS8-Like 1 (EPS8L1)
Binding Specificity:	AA 411-460
Reactivity:	Human, Mouse
Host:	Rabbit
Clonality:	Polyclonal
Conjugate:	This EPS8-Like 1 antibody is un-conjugated
Application:	Western Blotting (WB), ELISA, Immunohistochemistry (IHC)

Product Details

Immunogen:	The antiserum was produced against synthesized peptide derived from human ES8L1.
Isotype:	IgG
Specificity:	ES8L1 Antibody detects endogenous levels of total ES8L1 protein.
Purification:	The antibody was purified from rabbit antiserum by affinity-chromatography using immunogen.
Purity:	> 95 %

Target Details

Target:	EPS8-Like 1 (EPS8L1)
Abstract:	<a href="#">EPS8L1 Products</a>
Background:	Synonyms: Epidermal growth factor receptor pathway substrate 8-related protein 1, EPS8-like

## Target Details

---

protein 1  
NCBI Gene Symbol: ES8L1

Molecular Weight: 80 kDa

Gene ID: 54869

UniProt: [Q8TE68](#)

## Application Details

---

Application Notes: WB: 1:500~1:1000 IHC: 1:50~1:100 ELISA: 1:20000

Comment: Unigene-Number: Hs.438862 (NCBI Gene Symbol: ES8L1)

Restrictions: For Research Use only

## Handling

---

Format: Liquid

Concentration: 1 mg/mL

Buffer: phosphate buffered saline (without Mg<sup>2+</sup> and Ca<sup>2+</sup>), pH 7.4, 150 mM NaCl, 0.02 % sodium azide and 50 % glycerol.

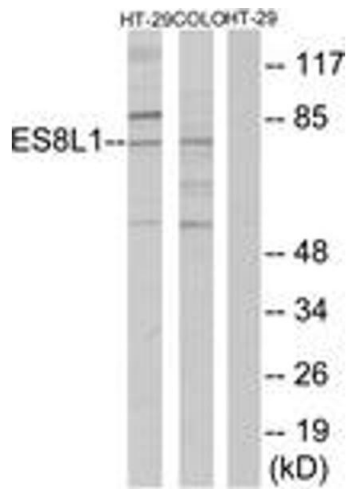
Preservative: Sodium azide

Precaution of Use: This product contains sodium azide: a POISONOUS AND HAZARDOUS SUBSTANCE which should be handled by trained staff only.

Storage: -20 °C

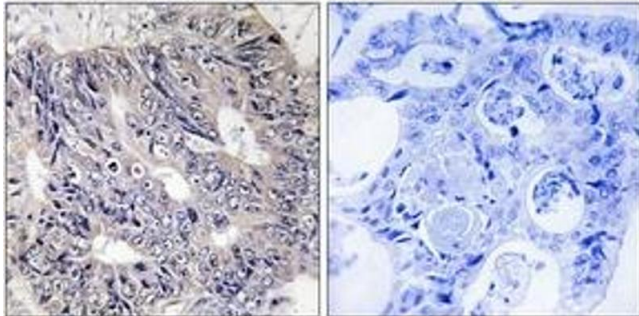
Storage Comment: Stable at -20°C for at least 1 year.

Expiry Date: 12 months



### Western Blotting

**Image 1.** Western blot analysis of extracts from COLO205/HT-29 cells, using ES8L1 Antibody. The lane on the right is treated with the synthesized peptide.



### Immunohistochemistry

**Image 2.** Immunohistochemistry analysis of paraffin-embedded human colon carcinoma tissue, using ES8L1 Antibody. The picture on the right is treated with the synthesized peptide.