

Datasheet for ABIN1534033
anti-MADD antibody (AA 751-800)

3 Images

[Go to Product page](#)

Overview

Quantity:	100 µg
Target:	MADD
Binding Specificity:	AA 751-800
Reactivity:	Human, Mouse, Rat
Host:	Rabbit
Clonality:	Polyclonal
Application:	Western Blotting (WB), ELISA, Immunohistochemistry (IHC), Immunofluorescence (IF)

Product Details

Immunogen:	The antiserum was produced against synthesized peptide derived from human MADD.
Isotype:	IgG
Specificity:	MADD Antibody detects endogenous levels of total MADD protein.
Purification:	The antibody was purified from rabbit antiserum by affinity-chromatography using immunogen.
Purity:	> 95 %

Target Details

Target:	MADD
Alternative Name:	MADD (MADD Products)
Background:	Synonyms: Differentially expressed in normal and neoplastic cells, Insulinoma glucagonoma clone 20, Rab3 GDP/GTP exchange factor

Target Details

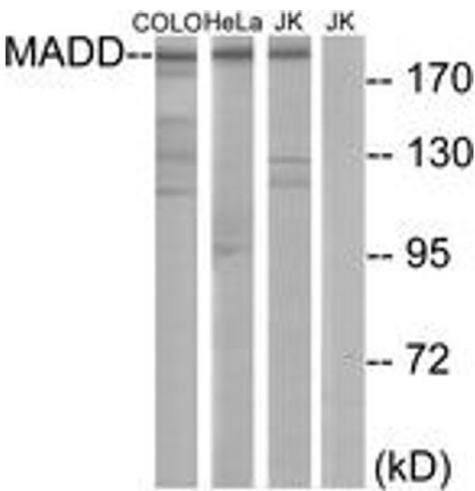
	NCBI Gene Symbol: MADD
Molecular Weight:	183 kDa
Gene ID:	8567
OMIM:	603584
UniProt:	Q8WVG6
Pathways:	Caspase Cascade in Apoptosis

Application Details

Application Notes:	WB: 1:500~1:1000 IHC: 1:50~1:100 IF: 1:100~1:500 ELISA: 1:1000
Comment:	Unigene-Number: Hs.82548 (NCBI Gene Symbol: MADD)
Restrictions:	For Research Use only

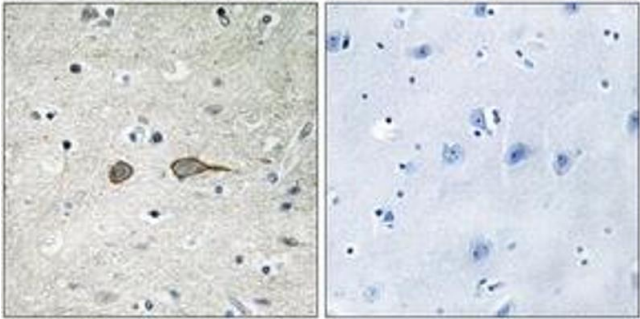
Handling

Format:	Liquid
Concentration:	1 mg/mL
Buffer:	phosphate buffered saline (without Mg ²⁺ and Ca ²⁺), pH 7.4, 150 mM NaCl, 0.02 % sodium azide and 50 % glycerol.
Preservative:	Sodium azide
Precaution of Use:	This product contains sodium azide: a POISONOUS AND HAZARDOUS SUBSTANCE which should be handled by trained staff only.
Storage:	-20 °C
Storage Comment:	Stable at -20°C for at least 1 year.
Expiry Date:	12 months



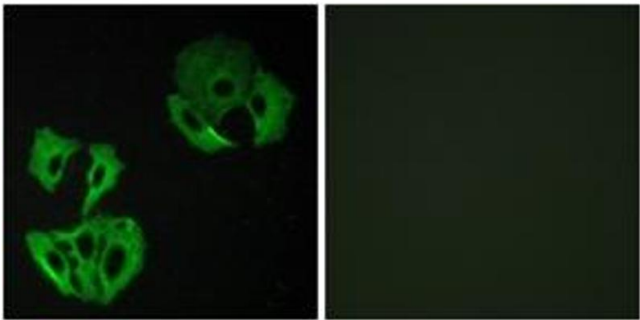
Western Blotting

Image 1. Western blot analysis of extracts from COLO/HeLa/Jurkat cells, using MADD Antibody. The lane on the right is treated with the synthesized peptide.



Immunohistochemistry

Image 2. Immunohistochemistry analysis of paraffin-embedded human brain tissue, using MADD Antibody. The picture on the right is treated with the synthesized peptide.



Immunofluorescence

Image 3. Immunofluorescence analysis of A549 cells, using MADD Antibody. The picture on the right is treated with the synthesized peptide.