

Datasheet for ABIN1534036
anti-BRI3BP antibody (AA 1-50)[Go to Product page](#)

2 Images

Overview

Quantity:	100 µg
Target:	BRI3BP
Binding Specificity:	AA 1-50
Reactivity:	Human, Mouse
Host:	Rabbit
Clonality:	Polyclonal
Conjugate:	This BRI3BP antibody is un-conjugated
Application:	Western Blotting (WB), ELISA, Immunohistochemistry (IHC)

Product Details

Immunogen:	The antiserum was produced against synthesized peptide derived from human BRI3B.
Isotype:	IgG
Specificity:	BRI3B Antibody detects endogenous levels of total BRI3B protein.
Purification:	The antibody was purified from rabbit antiserum by affinity-chromatography using immunogen.
Purity:	> 95 %

Target Details

Target:	BRI3BP
Alternative Name:	BRI3B (BRI3BP Products)
Background:	Synonyms: I3-binding protein, Cervical cancer 1 proto-oncogene-binding protein KG19, HCCR-1

Target Details

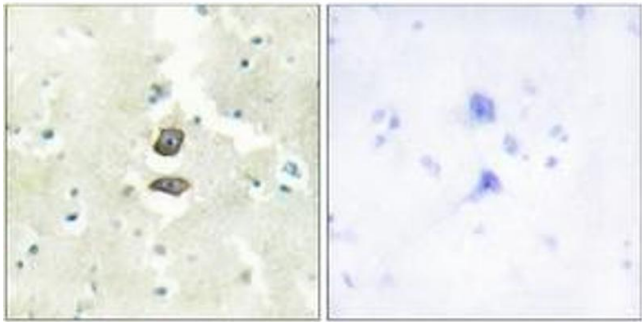
	NCBI Gene Symbol: BRI3B
Molecular Weight:	27 kDa
Gene ID:	140707
UniProt:	Q8WY22

Application Details

Application Notes:	WB: 1:500~1:1000 IHC: 1:50~1:100 ELISA: 1:20000
Comment:	Unigene-Number: Hs.596464 (NCBI Gene Symbol: BRI3B)
Restrictions:	For Research Use only

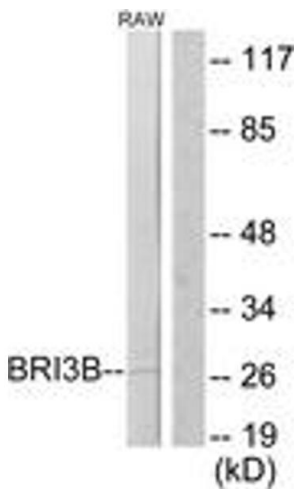
Handling

Format:	Liquid
Concentration:	1 mg/mL
Buffer:	phosphate buffered saline (without Mg ²⁺ and Ca ²⁺), pH 7.4, 150 mM NaCl, 0.02 % sodium azide and 50 % glycerol.
Preservative:	Sodium azide
Precaution of Use:	This product contains sodium azide: a POISONOUS AND HAZARDOUS SUBSTANCE which should be handled by trained staff only.
Storage:	-20 °C
Storage Comment:	Stable at -20°C for at least 1 year.
Expiry Date:	12 months



Immunohistochemistry

Image 1. Immunohistochemistry analysis of paraffin-embedded human brain tissue, using BRI3B Antibody. The picture on the right is treated with the synthesized peptide.



Western Blotting

Image 2. Western blot analysis of extracts from RAW264.7 cells, using BRI3B Antibody. The lane on the right is treated with the synthesized peptide.