



[Go to Product page](#)

Datasheet for ABIN1534038  
**anti-SMG7 antibody (AA 521-570)**

2 Images

Overview

Quantity:	100 µg
Target:	SMG7
Binding Specificity:	AA 521-570
Reactivity:	Human
Host:	Rabbit
Clonality:	Polyclonal
Conjugate:	This SMG7 antibody is un-conjugated
Application:	Western Blotting (WB), ELISA, Immunofluorescence (IF)

Product Details

Immunogen:	The antiserum was produced against synthesized peptide derived from human SMG7.
Isotype:	IgG
Specificity:	SMG7 Antibody detects endogenous levels of total SMG7 protein.
Purification:	The antibody was purified from rabbit antiserum by affinity-chromatography using immunogen.
Purity:	> 95 %

Target Details

Target:	SMG7
Alternative Name:	SMG7 ( <a href="#">SMG7 Products</a> )
Background:	Synonyms: C1orf16, EST1C, KIAA0250

## Target Details

---

NCBI Gene Symbol: SMG7

Molecular Weight: 127 kDa

Gene ID: 9887

OMIM: 610964

UniProt: [Q92540](#)

## Application Details

---

Application Notes: WB: 1:500~1:1000 IF: 1:100~1:500 ELISA: 1:5000

Comment: Unigene-Number: Hs.591463 (NCBI Gene Symbol: SMG7)

Restrictions: For Research Use only

## Handling

---

Format: Liquid

Concentration: 1 mg/mL

Buffer: phosphate buffered saline (without Mg<sup>2+</sup> and Ca<sup>2+</sup>), pH 7.4, 150 mM NaCl, 0.02 % sodium azide and 50 % glycerol.

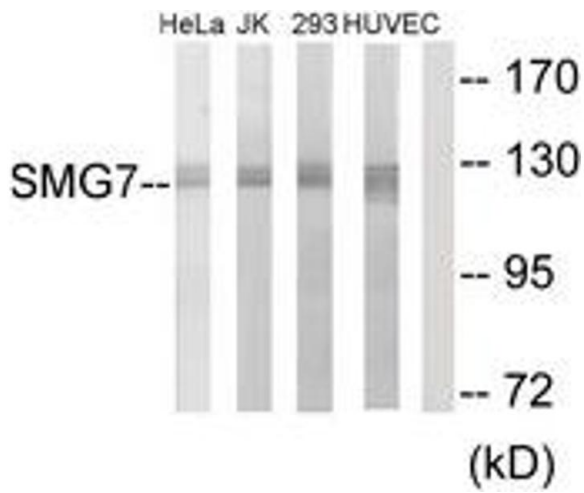
Preservative: Sodium azide

Precaution of Use: This product contains sodium azide: a POISONOUS AND HAZARDOUS SUBSTANCE which should be handled by trained staff only.

Storage: -20 °C

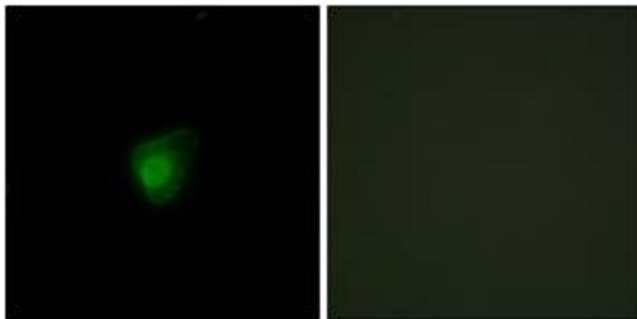
Storage Comment: Stable at -20°C for at least 1 year.

Expiry Date: 12 months



### Western Blotting

**Image 1.** Western blot analysis of extracts from HeLa/Jurkat/293/HuvEc cells, using SMG7 Antibody. The lane on the right is treated with the synthesized peptide.



### Immunofluorescence

**Image 2.** Immunofluorescence analysis of HepG2 cells, using SMG7 Antibody. The picture on the right is treated with the synthesized peptide.