

Datasheet for ABIN1534042
anti-DPF2 antibody (AA 151-200)

2 Images

[Go to Product page](#)

Overview

Quantity:	100 µg
Target:	DPF2
Binding Specificity:	AA 151-200
Reactivity:	Human, Mouse
Host:	Rabbit
Clonality:	Polyclonal
Conjugate:	This DPF2 antibody is un-conjugated
Application:	Western Blotting (WB), ELISA, Immunofluorescence (IF)

Product Details

Immunogen:	The antiserum was produced against synthesized peptide derived from human REQU.
Isotype:	IgG
Specificity:	REQU Antibody detects endogenous levels of total REQU protein.
Purification:	The antibody was purified from rabbit antiserum by affinity-chromatography using immunogen.
Purity:	> 95 %

Target Details

Target:	DPF2
Alternative Name:	REQU (DPF2 Products)
Background:	Synonyms: Apoptosis response zinc finger protein, D4, zinc and double PHD fingers family 2,

Target Details

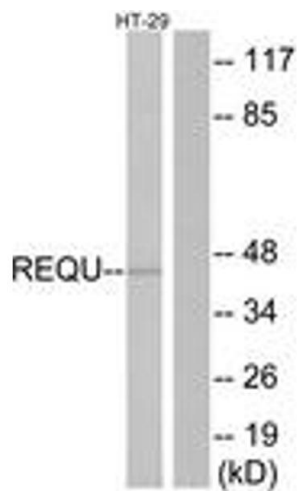
	DPF2, REQ, REQU, UBID4, Zinc-finger protein ubi-d4 NCBI Gene Symbol: REQU
Molecular Weight:	44 kDa
Gene ID:	5977
OMIM:	601671
UniProt:	Q92785

Application Details

Application Notes:	WB: 1:500~1:1000 IF: 1:100~1:500 ELISA: 1:10000
Comment:	Unigene-Number: Hs.13495 (NCBI Gene Symbol: REQU)
Restrictions:	For Research Use only

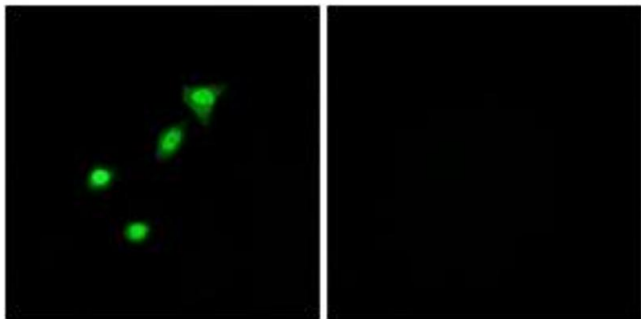
Handling

Format:	Liquid
Concentration:	1 mg/mL
Buffer:	phosphate buffered saline (without Mg ²⁺ and Ca ²⁺), pH 7.4, 150 mM NaCl, 0.02 % sodium azide and 50 % glycerol.
Preservative:	Sodium azide
Precaution of Use:	This product contains sodium azide: a POISONOUS AND HAZARDOUS SUBSTANCE which should be handled by trained staff only.
Storage:	-20 °C
Storage Comment:	Stable at -20°C for at least 1 year.
Expiry Date:	12 months



Western Blotting

Image 1. Western blot analysis of extracts from HT-29 cells, using REQU Antibody. The lane on the right is treated with the synthesized peptide.



Immunofluorescence

Image 2. Immunofluorescence analysis of A549 cells, using REQU Antibody. The picture on the right is treated with the synthesized peptide.