

Datasheet for ABIN1534052
anti-BRF1 antibody (AA 231-280)[Go to Product page](#)

3 Images

Overview

Quantity:	100 µg
Target:	BRF1
Binding Specificity:	AA 231-280
Reactivity:	Human, Mouse
Host:	Rabbit
Clonality:	Polyclonal
Conjugate:	This BRF1 antibody is un-conjugated
Application:	Western Blotting (WB), ELISA, Immunohistochemistry (IHC), Immunofluorescence (IF)

Product Details

Immunogen:	The antiserum was produced against synthesized peptide derived from human TF3B.
Isotype:	IgG
Specificity:	TF3B Antibody detects endogenous levels of total TF3B protein.
Purification:	The antibody was purified from rabbit antiserum by affinity-chromatography using immunogen.
Purity:	> 95 %

Target Details

Target:	BRF1
Abstract:	BRF1 Products
Background:	Synonyms: TFIIIB90, hTFIIIB90, B-related factor 1, BRF-1, hBRF, TATA box-binding protein-

Target Details

associated factor, RNA polymerase III, subunit 2, TAF3B2,
NCBI Gene Symbol: TF3B

Molecular Weight: 73 kDa

Gene ID: 2972

OMIM: 604902

UniProt: [Q92994](#)

Application Details

Application Notes: WB: 1:500~1:1000 IHC: 1:50~1:100 IF: 1:100~1:500 ELISA: 1:1000

Comment: Unigene-Number: Hs.424484 (NCBI Gene Symbol: TF3B)

Restrictions: For Research Use only

Handling

Format: Liquid

Concentration: 1 mg/mL

Buffer: phosphate buffered saline (without Mg²⁺ and Ca²⁺), pH 7.4, 150 mM NaCl, 0.02 % sodium azide and 50 % glycerol.

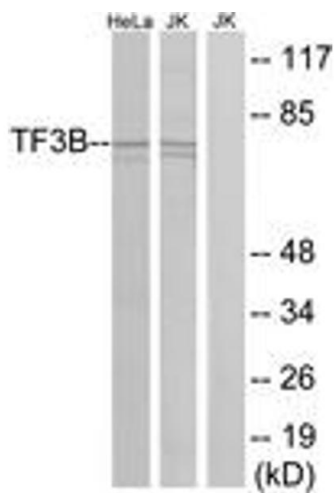
Preservative: Sodium azide

Precaution of Use: This product contains sodium azide: a POISONOUS AND HAZARDOUS SUBSTANCE which should be handled by trained staff only.

Storage: -20 °C

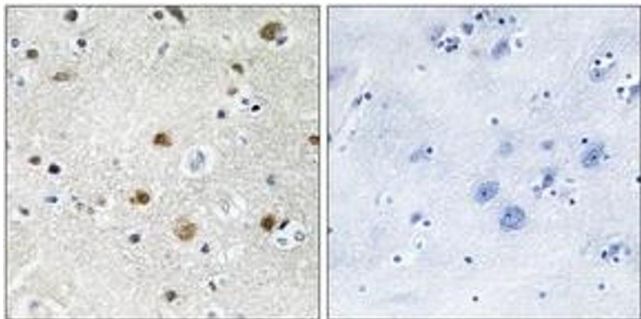
Storage Comment: Stable at -20°C for at least 1 year.

Expiry Date: 12 months



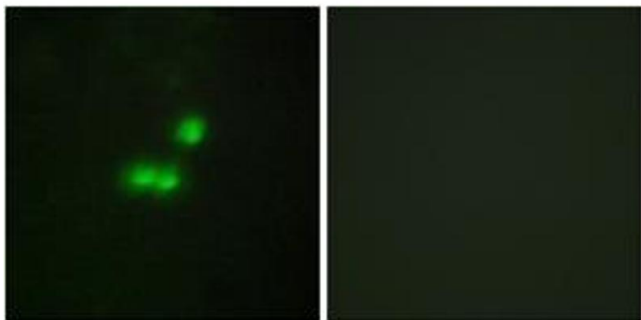
Western Blotting

Image 1. Western blot analysis of extracts from HeLa/Jurkat cells, using TF3B Antibody. The lane on the right is treated with the synthesized peptide.



Immunohistochemistry

Image 2. Immunohistochemistry analysis of paraffin-embedded human brain tissue, using TF3B Antibody. The picture on the right is treated with the synthesized peptide.



Immunofluorescence

Image 3. Immunofluorescence analysis of MCF7 cells, using TF3B Antibody. The picture on the right is treated with the synthesized peptide.