

Datasheet for ABIN1534075
anti-IP6K3 antibody (AA 201-250)

2 Images

[Go to Product page](#)

Overview

Quantity:	100 µg
Target:	IP6K3
Binding Specificity:	AA 201-250
Reactivity:	Human, Mouse
Host:	Rabbit
Clonality:	Polyclonal
Application:	ELISA, Western Blotting (WB), Immunohistochemistry (IHC)

Product Details

Immunogen:	The antiserum was produced against synthesized peptide derived from human IP6K3.
Isotype:	IgG
Specificity:	IP6K3 Antibody detects endogenous levels of total IP6K3 protein.
Purification:	The antibody was purified from rabbit antiserum by affinity-chromatography using immunogen.
Purity:	> 95 %

Target Details

Target:	IP6K3
Alternative Name:	IP6K3 (IP6K3 Products)
Background:	Synonyms: InsP6 kinase 3, Inositol hexakisphosphate kinase 3, NCBI Gene Symbol: IP6K3

Target Details

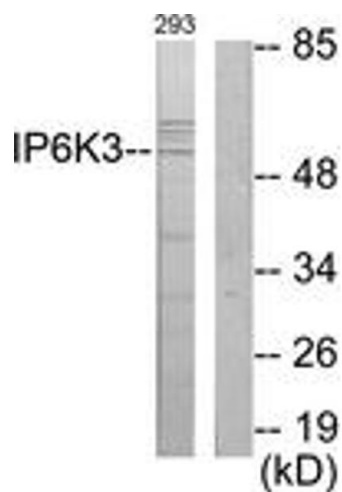
Molecular Weight:	46 kDa
Gene ID:	117283
OMIM:	606993
UniProt:	Q96PC2

Application Details

Application Notes:	WB: 1:500~1:1000 IHC: 1:50~1:100 ELISA: 1:20000
Comment:	Unigene-Number: Hs.17253 (NCBI Gene Symbol: IP6K3)
Restrictions:	For Research Use only

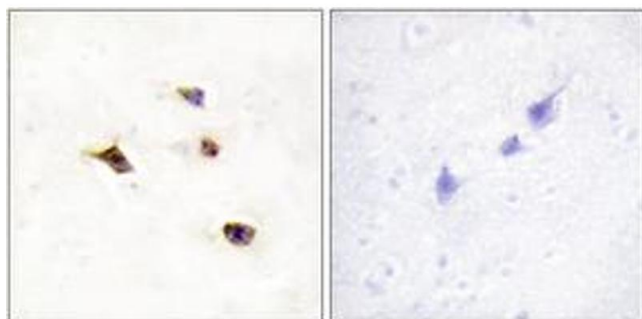
Handling

Format:	Liquid
Concentration:	1 mg/mL
Buffer:	phosphate buffered saline (without Mg2+ and Ca2+), pH 7.4, 150 mM NaCl, 0.02 % sodium azide and 50 % glycerol.
Preservative:	Sodium azide
Precaution of Use:	This product contains sodium azide: a POISONOUS AND HAZARDOUS SUBSTANCE which should be handled by trained staff only.
Storage:	-20 °C
Storage Comment:	Stable at -20°C for at least 1 year.
Expiry Date:	12 months



Western Blotting

Image 1. Western blot analysis of extracts from 293 cells, using IP6K3 Antibody. The lane on the right is treated with the synthesized peptide.



Immunohistochemistry

Image 2. Immunohistochemistry analysis of paraffin-embedded human brain tissue, using IP6K3 Antibody. The picture on the right is treated with the synthesized peptide.