

Datasheet for ABIN1534079  
**anti-CIB3 antibody (AA 138-187)**[Go to Product page](#)

## 1 Image

## Overview

Quantity:	100 µg
Target:	CIB3
Binding Specificity:	AA 138-187
Reactivity:	Human, Mouse
Host:	Rabbit
Clonality:	Polyclonal
Conjugate:	This CIB3 antibody is un-conjugated
Application:	Western Blotting (WB), ELISA

## Product Details

Immunogen:	The antiserum was produced against synthesized peptide derived from human CIB3.
Isotype:	IgG
Specificity:	CIB3 Antibody detects endogenous levels of total CIB3 protein.
Purification:	The antibody was purified from rabbit antiserum by affinity-chromatography using immunogen.
Purity:	> 95 %

## Target Details

Target:	CIB3
Alternative Name:	CIB3 ( <a href="#">CIB3 Products</a> )
Background:	Synonyms: Kinase-interacting protein 3, KIP 3

## Target Details

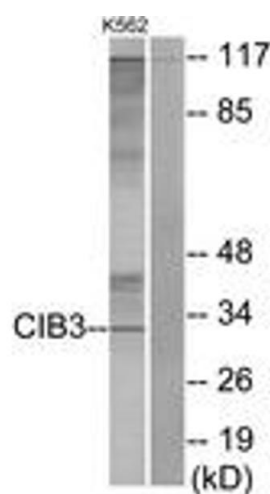
	NCBI Gene Symbol: CIB3
Molecular Weight:	21 kDa
Gene ID:	117286
OMIM:	610645
UniProt:	<a href="#">Q96Q77</a>

## Application Details

Application Notes:	WB: 1:500~1:1000 ELISA: 1:20000
Comment:	Unigene-Number: Hs.255432 (NCBI Gene Symbol: CIB3)
Restrictions:	For Research Use only

## Handling

Format:	Liquid
Concentration:	1 mg/mL
Buffer:	phosphate buffered saline (without Mg <sup>2+</sup> and Ca <sup>2+</sup> ), pH 7.4, 150 mM NaCl, 0.02 % sodium azide and 50 % glycerol.
Preservative:	Sodium azide
Precaution of Use:	This product contains sodium azide: a POISONOUS AND HAZARDOUS SUBSTANCE which should be handled by trained staff only.
Storage:	-20 °C
Storage Comment:	Stable at -20°C for at least 1 year.
Expiry Date:	12 months



Western Blotting

**Image 1.** Western blot analysis of extracts from K562 cells, using CIB3 Antibody. The lane on the right is treated with the synthesized peptide.